



# RADIUS

Issue 3.0 // 019

Jun // Jul // Aug '23

FREE

**New Holland**  
*launches two new  
editions to their  
product range*

We value  
**AGRI**

*The new financial  
obligations for  
business entities*

**Basjan se Boomhuis**  
*Briljante Borrels*

Your health is your  
**WEALTH**



ADVANCE



# JONGMENSE

SIEN DIE TOEKOMS

*anders*



'n Seker Toekoms



Die manier waarop **jongmense die toekoms sien**, spreek van positiwiteit – en van die keuse om in 'n nuwe tydsgreep relevant te wees. AgriSeker deel dié opgewondenheid oor die toekoms van landbou in Suid-Afrika. Ons leuse is nie verniet "'n Seker Toekoms" nie.

AgriSeker is gemotiveer om 'n bydrae te lewer tot die toekoms van ons land met 'n toegewyde fokus op landbou deur kennis, begrip en deelname in hierdie sektor. Ons fokus is op ons boere en jongmense, want ons het julle nodig vir die voortbestaan van landbou.

**Vra jou versekeringsmakelaar of vind ons aanlyn by [agriseker.co.za](http://agriseker.co.za)**



Through our values, we strive to be the Investment of Choice, Employer of Choice, Market of Choice, Supplier of Choice and a Good Corporate Citizen making a difference in the communities in which we operate while adding sustainable value to all our stakeholders.

## We Value

A

### **Accountability**

We add value in an ethical way and take responsibility for our actions.

G

### **Grow Trust**

We grow our business by building relationships of trust with all stakeholders.

R

### **Resilience**

We drive sustainable growth through agility and perseverance.

I

### **Innovation**

We develop unique solutions to solve complex challenges.





## Embracing Adaptation through the Lens of a Timeless Message

In a rapidly changing world, the ability to adapt becomes a defining characteristic of success and resilience. Adaptation allows us to navigate the twists and turns, the challenges and uncertainties that life presents. While adaptation is a concept deeply rooted in our collective human experience, it is also a theme that finds profound resonance within the pages of the Bible.

Throughout the scriptures, we encounter numerous stories of individuals who faced unexpected circumstances and had to adapt their plans, perspectives, and lives. From Joseph, who adapted to a life of slavery and later rose to a position of authority in Egypt, to Esther, who adapted to her new role as queen and risked her life to save her people, these stories reveal the power of adaptability in times of trial.

One must recognize the ultimate example of adaptation found in the teachings of Jesus Christ. His message transcends time and place, inviting us to adapt our hearts and minds to a higher calling of love, compassion, and forgiveness.

***The journey of adaptation is not one to be feared but embraced with courage and faith.***

He challenged societal norms, calling for a radical shift in perspective and behaviour. Jesus' parables often emphasized the importance of adapting one's mindset, likening it to new wine poured into fresh wineskins—an invitation to embrace change and growth.

As we confront the complexities of our modern world, the Bible's timeless message reminds us that adaptation is not merely a survival strategy but a transformative process. It encourages us to remain open to new possibilities, to let go of rigidity, and to embrace the unfolding of God's plan in our lives.

Adapting doesn't mean compromising our values or relinquishing our faith; instead, it empowers us to respond creatively and faithfully to our ever-evolving circumstances.

Just as the Bible teaches us that God's word is unchanging, it also underscores the importance of adapting our ways to reach a changing world. The Apostle Paul exemplified this principle when he wrote, "I have become all things to all people so that by all possible means I might save some" (1 Corinthians 9:22, NIV).

His adaptive approach allowed him to communicate the Gospel's transformative power to diverse audiences effectively.

In conclusion, the journey of adaptation is not one to be feared but embraced with courage and faith. As we navigate the currents of change, let us draw inspiration from the timeless wisdom found within the Bible.

May it serve as a compass guiding us through uncharted territories, reminding us that in every season of life, we can find solace, strength, and divine guidance through the power of adaptation.

**Louise Johnson // Editor: Radius**

TWK Agri (Pty) Ltd.  
PO Box 128, Piet Retief 2380  
Tel: 017 824 1000  
Email: [twk@twkagri.com](mailto:twk@twkagri.com)  
[www.twkagri.com](http://www.twkagri.com)

**RADIUS**  
Editor in Chief: Dupie van Rensburg  
Editor: Louise Johnson  
Graphic design: Louise Johnson  
Editorial Assistant: Hillie Schultz, Tahirah Amatullah  
Accounts: Farhaana Cassim

Invest in TWK  
[www.twkagri.com/invest](http://www.twkagri.com/invest)  
[invest@twkagri.com](mailto:invest@twkagri.com)  
Facebook: @TWKAgri//Instagram:twkagri  
Twitter: @TWK\_Agri//LinkedIn:TWK Agri  
TWK YouTube-channel: <http://bit.ly/twkvideos>

Advertising: Ruth Schultz, (Schmiltz Marketing)  
081 480 6413 | 083 583 5243  
[ruth@schmiltz.co.za](mailto:ruth@schmiltz.co.za)

Contributors:  
Cornelia Vermaak, Kayleigh Sole, Erich Jacobs, Eugene Joubert, Prof. Justin Bradfield, Annie Antonites, Jaco Jacobs, Johann Strauss, Letitia Coetzer, Angelika Visagie, Michael Clemente, Liezl Ehlers, Rachel Kinghorn, Andi Niebuhr, Amanda du Toit, Adelaide Dlamini, Steven Barnard, Leandra Gevers, Angus Buchan.

Printing: Novus Print

Editorial Enquiries: Tel: 082 322 1844  
Email: [radius@twkagri.com](mailto:radius@twkagri.com)

TWK Agri (PTY) Ltd and / Radius nor any of its officials, members, employees, agents, representatives, shareholders or directors shall not be liable for any loss, damage, or any liability of whatsoever nature which may arise to the reader as a consequence of this publication or as a result of the reader or any other person acting on the strength, accuracy or correctness of the content provided in this publication.

Radius makes no representation, furnishes no warranty or guarantee, actual or implied or otherwise that the content, information or data in this publication are free from errors, omissions or inaccuracies. No information, ideas, opinions, views or other data available in this publication should be regarded as professional advice or the professional opinion of Radius or any of its members, employees, agents, representatives and shareholders and all readers are informed to obtain professional advice before taking any course of action relation to anything contained in this publication.



# CONTENTS

<i>Top Crop Nursery joins TWK Agri</i>	<b>06</b>	<i>TWK Long Service Candidates</i>	<b>61</b>
<i>New Holland launches an upgraded Guardian™</i>	<b>10</b>	<i>Company News</i>	<b>62</b>
<i>Decades of Expertise</i>	<b>13</b>	<i>Recipes</i>	<b>79</b>
<i>A bold future for forests</i>	<b>14</b>	<i>Devotional</i>	<b>82</b>
<i>The dark side to the hunt</i>	<b>18</b>		
<i>New Holland launches its new TH7.32 telehandler</i>	<b>22</b>		
<i>The new financial obligations for business entities</i>	<b>24</b>		
<i>Shivers, snow and long pelts</i>	<b>28</b>		
<i>The Healer's horn</i>	<b>34</b>		
<i>Basjan se Boomhuis</i>	<b>36</b>		
<i>TWK Seedlings</i>	<b>43</b>		
<i>Groot Blokraai</i>	<b>45</b>		
<i>Healthy Habits: The gift of good advice</i>	<b>46</b>		
<i>Healthy Habits: Mindful eating</i>	<b>48</b>		
<i>Stylish enhancements for reimagined Fortuner</i>	<b>50</b>		
<i>King of the boundless sea</i>	<b>54</b>		
<i>Cold, but pretty</i>	<b>57</b>		
<i>Your health is your wealth</i>	<b>58</b>		
<i>Employees' Employee of the Year</i>	<b>60</b>		



*Top Crop Nursery, Pietermaritzburg*

# TOP CROP NURSERY *joins TWK AGRI*

**Travelling over the Umgeni River on the way to the New Hanover, one will pass Cramond in KwaZulu-Natal. This is a flourishing community with a lot to offer, with something to interest all curious adventurers. From Albert Falls Dam (in very close proximity) being a top bass fishing location (internationally renowned), to a large fauna and flora variety in the area, there are sights to attract both local and international visitors.**

**T**he Albert Falls Dam Nature Reserve offers some amazing activities such as hiking, cycling, canoeing, sailing, camping and of course, fishing. Bird watchers also flock to the area for some birding activities.

It is within this idyllic area that one finds Top Crop Nursery. But who is Top Crop Nursery? Top Crop Nursery, which opened its doors in 1981, has been a well-known business within the community for many years and has recently been added to the TWK family.

Speaking to Mike Kruger from Top Crop Nursery, they have always been a part of the local community, as well as a part of the TWK group, and they will continue to be part of the community.

The group of 75 working at Top Crop Nursery are experienced and knowledgeable. From

the first point of contact, Wendy De Bruyn, all the way to those working with the products (plants), you will find someone to direct you to what you need.

Top Crop and Superlawn has been, and continues to be, a leader in certain lawn and turf grasses throughout the country.

Superlawn grass has been planted on Wanderers (Centurion) and Newlands (Cape Town) cricket pitches. Their grass can be found on Kings park rugby stadium, Moses Mabhida stadium and many other stadia.

We are proud of our turf being used on both Greyville and Scottsville racecourses as well as the Ashburton and Summerveld Training Centres. Added to the list, there is grass developed, grown and supplied to many golf courses including some of the Top Courses.

Trays of grass have been supplied to schools throughout the country. If you buy grass from Builders stores it is likely to have come from Top Crop. Grasses have also been exported to the Middle East and to the Bahamas, as well as our neighbouring countries. The list is endless.

**“We concentrate on having the best seasonal plants and grasses available for delivery throughout the country,” Mike Kruger.**

No other business has the selection of warm season grasses that Top Crop can offer.





Seedling



Lampranthus Orange



Iceberg Rose

### But who do they cater for?

Top Crop Nursery caters mainly for other nurseries across the country and overseas, as well as for landscapers (buying in bulk). But what does Top Crop and Superlawn produce?

Top Crop and Superlawn produce cuttings and grass, ornamentals, as well as garden and landscape greens on a wholesale level.

They have a range of about 250 species and varieties of both indigenous and exotic perennial plants that they are growing (which will be expanded in time). They carry the largest range of indigenous lawn and ornamental grasses (veld grasses) in the country.

Indigenous grass has numerous benefits. It may be used to rehabilitate areas where erosion took place or where alien plants were removed. It also uses less water than alien species.

They do produce a number of exotic species as well for those who are in need of something a bit different. With several species available, they will likely have something you need.

**"Top Crop Nursery is known for unique products of high quality."**

At Top Crop Nursery they take considerable care with regards to where indigenous grass' seed originally came from, in order to return them to areas with similar climates (this means adaptability is more likely). The indigenous grass plugs are grown from carefully selected seed (harvested from the wild), and grown in the nursery till they can be shipped out, ready to be planted. Their options will ensure you find everything you need.

Top Crop Nursery is known for unique products of high quality. This is something that will benefit quite a few sectors, with farmers and reserves being two of the most obvious beneficiaries of indigenous grass.



Zanele and Khalephile



Buyile



Chlorah



Zanele

In a country that has a lot of soil erosion, as well as numerous alien plants, it would surely be a good thing. With a strong movement to plant more indigenous plants and grasses, the popularity of indigenous grass will increase over the next couple of years.

#### What makes their products unique and ideal to use?

The health of the plants is of utmost importance. Care is taken to ensure the nutrition of the plants, and how they will thrive when replanted (hardiness).

Healthy plants, whether cuttings or ornamentals, need to be able to thrive in their new environments, and products coming from Top Crop Nursery will do just that.

Top Crop Nursery is known for unique products of high quality that are readily available to be delivered to all centers in South Africa, as well as neighboring countries. They will continue to deliver to their international clientele as well.

For the foreseeable future, they will concentrate on the production of plants for the nursery and landscaping trade. Increasing the range and availability of these products is a high priority for them, whilst ensuring the service received and quality of the products remains high.

Due to some changes that were made in recent months, where forestry and vegetable production have been moved to Sunshine Seedling Services, this has left more space in which other popular lines can be expanded. With larger

**"It is always pleasant to do business with people who know both what they are talking about, as well as their products. Mixing in passion for their products as well as a high level of quality and service? That is a winning combination."**





*Osteospermum, Gaura Pink, Buxus Semp, Gazania Uniflora, Carpabrotus Edulis*

numbers, popular lines can be supplied to more clients. And even some new lines can be brought in the future, offering more high quality products. All of our Ornamental plugs are produced in a 98 cavity deep Ellepot plug.

So, whether you are doing some large-scale landscaping and you are in need of high-quality ornamentals, or if you are looking at exotic or indigenous grass, the team at Top Crop Nursery are your point of contact. And yes, that means your local nursery can stock Top Crop Nursery products!

May Top Crop Nursery find their place in the TWK family and flourish for many more years to come!

And if you do find yourself in the Cramond area, take some time to explore. You might just find some peace for your soul, or catch a bass that didn't get away!

**Top Crop Nursery can be found at Brigadon Farm Cramond District and they can be reached on [ornamentals@superlawn.co.za](mailto:ornamentals@superlawn.co.za) or Tel: 033 569 1333/4/5.**

By Cornelia Vermaak, Kayleigh Sole ■



*Plectranthus Ciliatus*



*Gazania SPP*



# *New Holland launches an upgraded Guardian™*

**Updated Guardian sprayers combine IntelliSpray™ II nozzle technology, IntelliSteer™ auto guidance and IntelliView™ 12 monitor to improve operator performance and comfort.**

**New Holland launches upgraded lineup of Guardian™ front boom sprayers utilizing Raven precision technology for more integrated experience and efficient use.**

more efficiency and profitability, as well as empowering them to make more informed agronomic and logistical decisions."

## **Connected Workflow™ and integration of Raven precision technology**

This lineup of Guardian sprayers incorporates precision technologies: Slingshot® from Raven and IntelliSpray™ II. The data generated from these features are collected, streamlined and aggregated by Raven's Connected Workflow™ system. The Connected Workflow system works by syncing data from the office to the field and back again for simplified management of work, idle and transit time.

With the incorporation of IntelliSpray II, the Guardian sprayers now offer the most precise nozzle control system on the market and ensure unmatched droplet coverage accuracy, up to 2.5 times more accurate than comparable systems. These enhancements help operators and growers optimize coverage, minimize skips and overlaps, and reduce input costs. The IntelliSpray II pulse width modulation system leads the industry with a broader range of applications – Standard, Bypass, Variable Pressure, High Flow, High Flow VP and On/Off

– producing higher flow and pressure ratings of up to 17% increased flow and operating pressure and greater level of accuracy due to its 20Hz pulse rate.

The utilisation of Slingshot on the Guardian sprayers empowers operators and growers to make more data-driven decisions. Slingshot generates a high-level view of data from beginning through completion of a job, including traceability reports, application records, fleet efficiency track edits and transferable work orders.

**Guardian™ front boom sprayers come equipped with Raven solutions that increase application efficiency, including Slingshot® and VSN® Visual Guidance technologies.**

**N**ew Holland Agriculture is redefining its lineup of SP310F and SP380F Guardian front boom sprayers to feature new technological and precision capabilities.

These sprayers integrate the advanced precision technologies from Raven with the high horsepower and large tanks New Holland sprayers are known for, to enhance efficiency in and out of the field, while covering more hectares per hour in the field.

"The advancements made to the Guardian front boom sprayer are really elevating the operator experience in the cab while improving application accuracy and the quality of data collected," said Jason Hardy, Global Product Manager for New Holland Sprayers.

"These upgraded units are connecting many components of an operation and data points for owners and operators to find







HOW WE CAN HELP YOU

# Finance Your Growth

## TWK FINANCING

T: (017) 824 1518

E: kredietafdeling@twkagri.com

A: 11 De Wet Street  
Piet Retief, 2380

[www.twkagri.com](http://www.twkagri.com)



### Production Facility

This facility enables farmers to acquire agricultural products from the TWK-trading branches for their farming requirements. The repayment date is scheduled to coincide with harvest times.



### Monthly Account

Month accounts are offered for the purchase of products at any TWK trading branch.



### Asset Financing

Asset financing enables consumers to acquire farming equipment and vehicles for a period of up to 60 months.

**Our nation will not only thrive on food:** "It is also in our thankfulness for the Godly provision that seeds of hope will continue to sprout."

TWK Agri (Pty) Ltd. is an authorised Financial Services and registered Credit Provider (NCRCP: 6849) | Terms and Conditions apply

**ideal**  
ADULT  
DOG



GLOSSY SKIN & COAT



BONE & JOINT HEALTH



HIGH DIGESTIBILITY



HEALTHY TEETH & GUMS



**ideal**  
ADULT  
CAT



GLOSSY SKIN & COAT



STRONG IMMUNE SYSTEM



HEALTHY TEETH & GUMS



HIGH DIGESTIBILITY



IdealPetFood  
idealpetfood  
idealpetfood.co.za



**ideal**  
PUPPY



GASTRO INTESTINAL  
HEALTH AND DIGESTION



STRONG IMMUNE SYSTEM



GLOSSY SKIN AND COAT



SOUND BONES AND TEETH



QUALITY INGREDIENTS



**ideal**  
KITTEN



HEALTHY DEVELOPMENT



STRONG IMMUNE SYSTEM



HEALTHY TEETH & GUMS



GOOD EYESIGHT &  
HEALTHY HEART



QUALITY INGREDIENTS







# **ECHO**®

## **DEPEND ON IT**

# **DECADES OF Expertise**

In a constantly changing world, one thing you can depend on is your Echo tools. For over 75 years, Echo has been designing and building high-performance, commercial-quality tools. From humble beginnings in Japan with a simple handheld crop duster, Echo has become a technological leader and a well-respected global brand. Echo tools continuously exceed increasingly stringent emissions requirements yet retain robust power and dependability.

Echo offers a wide range of petrol products and is not limited to petrol trimmers, brush cutters, handheld blowers, backpack fire control blowers, fertilizer spreaders, Garden Series battery-operated products, etc. So, whether you're a fully-fledged outdoor professional or someone newly inspired to transform your environment into something more, Echo guarantees a tool crafted with expertise and passion, a tool you can depend on.



# A bold future for forests

**The Sunshine Team believe that there is an upturn in the forestry industry and the future looks extremely positive – here are their purchasing and planting tips.**

**W**hether you are a returning client or a new client joining the fold, we're striving to ensure you are assisted in your forestry operations and that you are served the best quality seedlings. Along with this, there are a few important things to note to ensure a bright future for our forests.

## **A note on wattle clones**

During the past two years the demand for the Wattle rust clones, SP 644 and AF1, has surpassed our current production capacity. This means that it is important for growers to plan both early and diligently, as well as place their orders as soon as possible to ensure they get the seedlings they both need and want.

Growers who have planted these clones before, have only delivered positive feedback to us about them. However, it should be noted that with all clones, it is critical that only good sites are chosen to plant them to ensure they remain healthy and grow well.

Unfortunately, with the constraints involved with the production of these clones, it will now be necessary for us to implement a first come, first serve system on all our orders. Added to that, we will prioritize orders for wattle clones if the grower has placed his (or her) entire forestry seedling requirements with us at Sunshine Seedlings, for the season. This is done to ensure we can help as many clients as possible, fairly.

This is taking place in the context of an expected surge in the global consumption of timber products from current levels, with both developed and developing countries increasing consumption at the same time.

Increased world population and their needs mean a higher demand for timber products. This expected increase in demand for timber will coincide with the long-term forecasts of decreasing supply levels, which will influence global timber prices, in turn benefitting timber farmers in the long run.



## Pricing Structure

**This season we have introduced a three-tier pricing structure:**

**Order price:** The listed price; an order has been placed but no deposit has been paid yet.

**Order price + deposit paid:** The listed price, less 10% if a 1/3 deposit is paid for the seedlings before the 30th of June 2023.

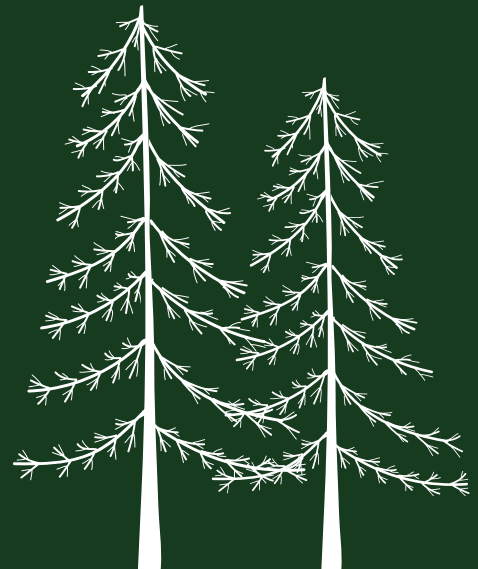
**Spec price:** Order price + 10% if the seedlings are taken from the nursery without an order being placed. This means that someone not placing an order and not paying a deposit, or taking more than what they have ordered, will pay an extra 20% for seedlings taken.



**“We are facing an expected surge in the global consumption of timber products.”**



**“The bottom line is to start correctly, and it will benefit you in the long run.”**



## **PRESTASIE IS AAN DIE ORDE VAN DIE DAG SAMEWERKING MAAK DIT MOONTLIK**

Die keuses wat jy maak het 'n invloed op die prestasie van jou diere en uiteindelik die sukses van jou onderneming. Molatek is soveel meer as wetenskaplik geformuleerde veevoer. Molatek is deel van jou wêreld. Ons kundigheid gee ons die voorsprong sodat jy met selfvertroue op ons nommer kan druk.

Wanneer dit kom by die groei, gesondheid en kondisie van jou diere, **lei samewerking tot prestasie.**



uppe marketing A34263



Kontak jou tegniese adviseur vir al jou voer- en voedingsvereistes.

Kontak ons: +27 (0)13 791-1036 • [molatek@rcffoods.com](mailto:molatek@rcffoods.com)  
[www.molatek.co.za](http://www.molatek.co.za) • [www.rcffoods.co.za](http://www.rcffoods.co.za)

  
**MOLATEK**

## Buying and planting tips

After meeting with farmers, we'd like to share a few things that we have noticed during the planting season for you to keep in mind.

- Customers must place orders on time to ensure that seedlings are in prime condition for planting.
- Good plant quality is the basis for tree planting success. It is not worth a farmer's effort to prepare an area, transport plants to the prepared field, transplant and maintain these trees unless they are of good quality. Higher survival rates and faster growth are extremely important for profitability.
- A poor-quality tree will always be a poor-quality tree, even if it was planted on a well-prepared, good site. In the field, each poor-quality tree wastes space and resources, leading to low site productivity and lower income. Poor-quality trees will never turn into high quality trees. High quality trees have a higher survival – and faster growth rate in the field – than poor quality trees. The bottom line is to start correctly, and it will benefit you in the long run.
- Orders that are placed need to be taken within a month of the order date. This is to ensure quality isn't compromised (wilting seedlings, etc.), which could lead to lower profitability.
- Ensure that the nursery knows the precise size of the seedling that you need before the planting season starts. Each customer has a different need depending on whether they are planting manually or by machine. Communicate this with the nursery and make sure they have it on your order.
- DO NOT put the plants you receive under the biggest, and most shady tree in the garden. The nursery grows these plants under  $\pm 20\%$  shade (hail net / plastic / both), and the plants are hardened off to survive under full light conditions (optimum conditions). By keeping them under a big tree, you are reversing this phenomenon, softening them off and these plants will turn yellow as a result (losing some of their quality in the process).
- Ensure that seedlings are watered before planting and then again, a few times during the day. The seedlings need to go into the ground wet, regardless of how you are planting them or the weather conditions. They need that extra moisture to thrive.
- Avoid planting wattle during December and January. We have generally seen higher mortality in the field for the last few years during this period than others. To ensure the profitability of your field, don't become a statistic – know your fields.

By Erich Jacobs ■



## Delivery charges

Unfortunately, as with all other business, we are also affected by the increasing labour, electricity, and fuel prices. Due to these economic impacts within production and delivery, we have had to increase our prices more than what we have in previous seasons, percentage wise.

However, we believe that our plants are still competitively positioned (priced) in the marketplace and our clients will not be affected too much.

There will also be a delivery fee per 1 000 plants, depending on the distance your farm is from one of the nurseries and the size of the loads that are needed.

This is something we endeavour to communicate with our clients to ensure that they are not in the dark with regards to the delivery of their seedlings.

*The Sunshine Team can be contacted through Erich Jacobs: 076 260 1306.*







## Manufactured Timber Products

The timber for our treatment plants are sourced from TWK's own sustainable plantations.

Our treatment facilities meet the South African National Standards SANS 457, SANS 754, SANS 1288.

We pride ourselves on producing Quality H4 and H5 products. On Time. In Full.

Our CCA and Creosote product range include:

- Building and fencing
- Agricultural netting
- Transmission
- Vineyard
- Orchard



### Available at:

#### TWK Trade

Balfour	T: (017) 773 1708
Belfast	T: (013) 253 2464
Bethal	T: (017) 647 6896
Bizana	T: (039) 251 0644
Carolina	T: (017) 843 2817
Cedarville	T: (039) 757 5205/6
Dundee	T: (034) 212 5995/68
Empangeni	T: (035) 787 0695
Ermelo	T: (017) 811 1603
Flagstaff	T: (082) 645 6327
Greytown	T: (033) 413 2161
Howick	T: (033) 330 3046/7
Ixopo	T: (039) 834 1188
Kokstad	T: (039) 727 2143
Lothair	T: (017) 845 3030/1
Lydenburg	T: (013) 235 2115
Middelburg	T: (013) 282 5423
Mooi River	T: (033) 263 2440
Piet Retief	T: (017) 824 1070
Piet Retief Sylyn	T: (017) 824 1084
Pietermaritzburg	T: (033) 342 1530
Pongola	T: (034) 413 1360
Swartberg	T: (039) 880 0046
Swaziland	T: 00268 2518 6866
Underberg	T: (033) 701 2229
Vryheid	T: (034) 983 2595
Winterton	T: (036) 488 2161

Durban Timberyard T: (081) 367 2676



## THE F50/180/4 **FALCON SLASHER**

A Falcon Slasher is **built to last** and is capable of **coping**  
with the tough conditions unique to Africa

- The off-set hitch is standard on this model and permits cutting up to a boundary fence
- Round blade disc with 4 blades: better suited to general cutting operations and providing a finer, higher-quality cut.



*"Often copied ... never equalled."*



Proud Dealer

For more information please contact us on 033 330 4764 or visit your nearest Falcon dealer.  
[www.falconequipment.co.za](http://www.falconequipment.co.za)





**We are quite comfortable with hunting during hunting season in controlled environments, but there is a dark side to the hunt: poaching. Poaching wildlife is a crime; here's what you can do to help stop it.**

**F**rom the picturesque valleys in Natal, to the misty hills of Mpumalanga, along the Drakensberg mountain range and down to the Cap, poaching is running rampant and threatening our wildlife and livelihoods.

While controlled hunting involves hunting animals in controlled numbers and in a humane way to preserve a species' existence, poaching is the uncontrolled killing and trafficking of wildlife for a profit.

When thinking about poaching, the first thought that comes to mind is rhino poaching. Rhino poaching is front and centre in the media, but what about other animals?

Some animals are saved from poachers, but others are not found in time. Many are on the brink of extinction because of poaching.

# The Dark Side to the Hunt





## Why poaching?

The reason poaching exists is due to high levels of unemployment, and the fact that poaching provides people with livelihood. Supplying animals for trade and bush meat brings in funds that people need to survive.

In most cases, poaching hasn't evolved too much over the years. Traps are still based on the same principles, although they are made with different materials.

Many animals caught in poachers' traps are not caught to be eaten, rather they are used as ingredients in traditional medicine or even to be trafficked as exotic pets.

For the majority of animals poached with traps, the bush meat trade is to blame. This is a trade that flourishes in areas of high unemployment.

There is a need for certain parts of animals, and these needs may fulfil ulterior motives. In some cases, the international market for certain products is sizeable.

If the demand from consumers lowers and unemployment is reduced, then poaching will reduce.

## How to stop poaching

For many of us, these are global and national issues, but at an individual and community level, we can at least attempt to rid our areas of the practice and stop the placing of traps.

Start by getting into the veld yourself. Keep an eye out for traps, which are likely to be hidden in footpaths animals use (for example underneath fences) or even near (and in) feeding spots.

Encouraging workers to help look out for traps and to dismantle the traps when found will also lower your losses. Your workers will have to become your allies in fighting poaching, since they are in the veld so often.

Some of these traps take shape in the form of wires (fencing wires) and even nylon ropes to catch animals going through them, by lynching them around their necks or even just catching a limb.

The more "sophisticated" types of traps consist of cages. Some of these animals are stuck in traps for several days before they ultimately succumb to blood loss, exposure, and dehydration.

Traps are usually set in areas where humans don't often wander as animals shy away from human scents. They are also hidden in the underbrush or amongst thick vegetation. At other times they are in quite obvious spots. Where they are placed as well as what prey is being caught, differs.

Animals like pangolins (the number one most poached animal) are highly endangered (red list) animals that are close to extinction, while other smaller animals like steenbuck are also often caught in these traps. They are rarely found in time to save them.

Many of these traps catch farmers' livestock and game, which in turn means the farmer suffers losses. In particular, game farms and reserves loose numerous animals every year.

Small and large cats are also a popular group that are being targeted by poachers. They set up traps on private properties to catch these animals alive, to traffic them to wealthy buyers.

**"We can rid our areas the practice, by stopping the placing of traps and working within the law."**

## Do your bit to reduce poaching

1. Remove traps that are found and dispose of them in a safe manner;
2. Teach your workers to keep a look out for traps daily;
3. Encourage people and communities to get involved with conservation;
4. Work within the law to fight poaching;
5. Find a legal and legitimate way to stop the supply chain.

**"Poaching exists due to high levels of unemployment, since it provides people with livelihood."**

## A serious crime

Poaching is seen as a serious crime in South Africa.

As a community, it is our duty to help and inform each other when hunting parties are seen and inform the police on time so they can send out a vehicle to the area (even if it is just to patrol). Be active and be visible.

The legal ramifications of being found guilty of poaching (and trafficking) range from fines to jail sentences. It also depends on what animal (or bird) was poached and whether or not it was a "common" animal or one that is considered of valuable, or even endangered.

Getting local authorities on your side and using the services of security groups will help protect wildlife in the long run.

Whether it's a herd of blesbuck that is killed over a weekend, or a flock of sheep that was left for dead or even one pangolin that was taken from its habitat, poaching causes financial and environmental damage that can take years to recover.

For those in protected environments and declared reserves, there is slightly more support when it comes to poaching (in the form of prosecuting guilty parties). But that doesn't mean private individuals can't do anything.

You can gather sufficient evidence, take photos and if there is any evidence (from hunting dogs to traps), hand them over to the authorities.

Never act alone and never act outside the law. If we each do our part, we can save as many species as we can from poaching.

### Hunting with dogs

There is another aspect to poaching, which involves hunting with dogs that are encouraged to kill or hold certain animals by their owners and handlers.

Dogs are very effective hunters and catch prey from hares to small bucks. Even herds of buck (like Impala) can be completely wiped out in the span of a weekend with hunting dogs. There are specific guidelines that you will have to follow if you encounter poachers with dogs.

The first step is calling your local police station (hunting with dogs is illegal) and you can follow up by calling your nearest SPCA branch. If you do find some of these hunting dogs alone on your property (unaccompanied by a human), you will have to hand them over to the police or the SPCA for them to handle the animals further.

### Educate and encourage

It is important to educate children and adults about the effects of poaching, both short and long term.

**“There are specific guidelines that you will have to follow if you encounter poachers with dogs.”**

This is a start to get communities to help conserve wildlife, as is cultivating a love for nature in young people and an understanding that it is our duty to protect our wildlife and support its diversity.

By Cornelia Vermaak ■



## TWK AGRI INSURANCE

### Self-help Claims Portal



**Access our new claims portal for a seamless claims experience**

#### Get in touch:

T: (017) 824 1503  
E: insure@twkagri.com  
A: 11 De Wet Street, Piet Retief, 2380

[www.twkagri.com](http://www.twkagri.com)

TWK Agri (Pty) Ltd. is an authorised Financial Services & Credit Provider (FSP: 45055 & NCRCP: 6849)







4Mix International (Pty) Ltd • Co.Reg.No. 2004/015937/07  
Postnet Equestria, Suite 587 • Private Bag X1,  
The Willows, Pretoria  
Tel: 012 803 1472 • www.4mixinternational.com



Helping your  
animals cope with

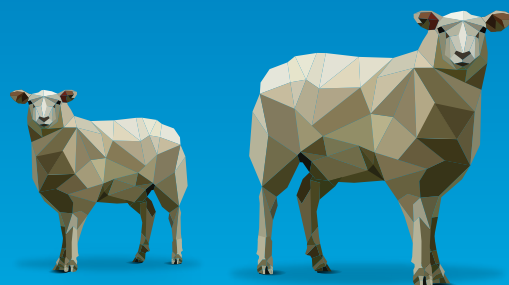
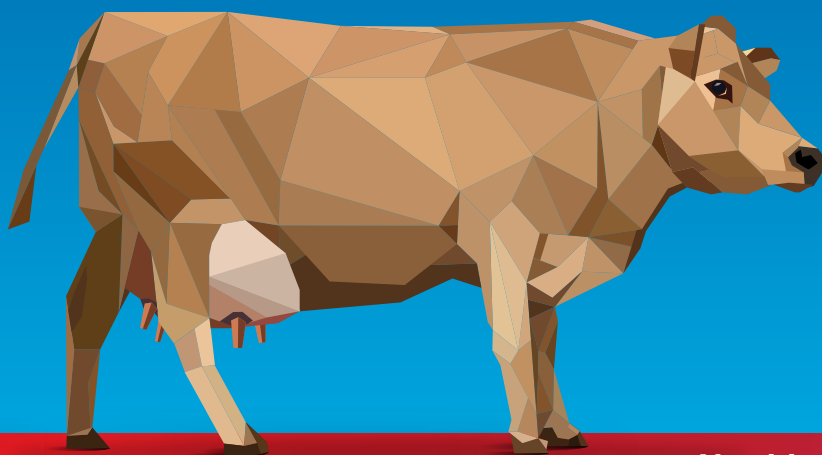
# Metabolic Challenges after partuition

By introducing

## FRESH START

Fresh Start: V Reg.No. V23991 Act 36/1947

to your supplement mix, you take control of  
nutritional disorders and add a source of energy



**Nutritional Supplement for Sheep & Dairy Cows**

## A source of Energy for your young animals

By introducing



## FIRST DRINK GOLD

First Drink Gold: V Reg.No. V29641 Act 36/1947

to your supplement mix, you take control of  
nutritional disorders and add a source of energy

First Drink Gold can also be used to energetically support pre-weaned  
animals at the same daily dose rates when animals are challenged by  
disease conditions or stressful conditions like dehorning, castration, tail  
docking, vaccination etc.

**PRESCRIBED BY VETERINARIANS**

Veterinary Approved Establishment. Reg. No. : ZA 14/56

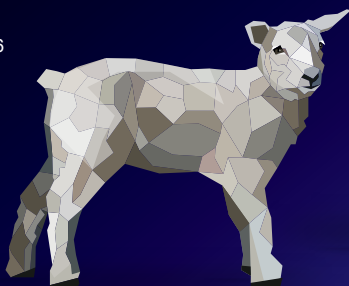
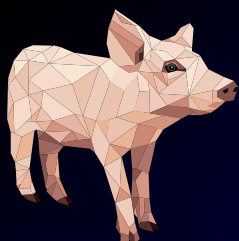


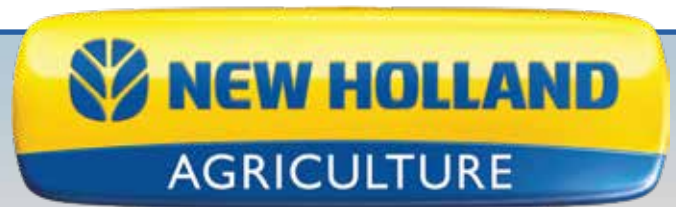
4Mix International (Pty) Ltd • Co.Reg.No. 2004/015937/07  
Postnet Equestria, Suite 587 • Private Bag X1,  
The Willows, Pretoria  
Tel: 012 803 1472 • www.4mixinternational.com



Proud to be a  
South African  
company

**Harness the  
Power of Gold**





**It can lift objects as high as 7m, has a 3,2t capacity and offers an ultra-comfortable, spacious cabin with a full 360° view.**

## *New Holland launches its new TH7.32 telehandler*

**New Holland Agriculture's impressive display of machinery at the 2023 NAMPO Harvest Day featured several exciting new offerings, including this year's headline act: the launch of the TH7.32 telehandler, a new addition to the company's extensive range of agricultural equipment.**

**A**ccording to Jaco du Preez, New Holland Agriculture's Marketing Manager, New Holland telehandlers have continued to deliver an unrivalled blend of performance, dependability and affordability for over 20 years. "Designed for applications like materials handling, yard work and stacking large bales, the new TH7.32 is the ideal choice for arable, mixed farm and contract applications. It is the default choice for demanding farm and contract operators, with its high power to weight ratio enabling the delivery of exceptional performance in the most demanding applications," he said.

### **Productivity improving features**

The TH7.32 benefits from an all new 4x3 PowerShift™ transmission, providing smoother shifting and shuttling performance resulting in a better driving experience. Compliant to Tier 3 emissions standards, enhanced performance and economy is matched to improved comfort and reduced operating costs. The very latest cab sets a benchmark for low noise and comfort.

The best in class 600 hour service intervals ensure the machine is kept busy working for longer. A large one-piece hood gives full access to the engine bay and lower side panels can be opened to give even more access to the engine. Engine oil, water coolant, air filter, radiators and all daily checks are easy to check and service. Radiators fold out for excellent cleaning access.

### **High comfort and ergonomics**

The new TH model features an

**Capable of handling any task on the farm, this stable and manoeuvrable machine has a 4x3 power-shift transmission, a 140 litre/min hydraulic flow and a powerful 98kW engine producing 549Nm of torque at 1 500 r/min.**



advanced cab design that offers improved comfort, noise suppression and visibility for maximum productivity at any time. The new LED light option can produce up to 25 000 lumen of combined lighting power to turn night into day and increase safety and productivity.

New Holland has taken its established expertise in tractor cab design and applied it to the 360° vision cab. Offering class-leading space and comfort, the cab affords excellent all-round visibility with an unparalleled view of the front of the carriage and forks when fully lowered. During work, this extra visibility significantly boosts productivity.

A seat mounted joystick is available for ergonomic excellence and fatigue free operation and the cab boasts a clear and visible instrument cluster. Comfortable driving makes all the difference on long working days with an air-suspended and heated seat.

### Enhanced quality and strength

The TH7.32 telehandler features a twin U-shaped robot welded boom that is extremely rigid and durable. The H-shaped ladder chassis has massive torsional strength and is engineered to operate in the most demanding applications. New Holland employs state-of-the-art manufacturing techniques in the production line for TH models. Robot welding is a key manufacturing process and ensures consistent quality during chassis and boom construction.

Hydraulic dampers ensure smooth boom retraction and extension. The dampers also protect the boom and operator from regular shock loads. The TH7.32 is designed with 40/60 weight distribution, eliminating the need for bolt-on counterweights, ensuring maximum stability and traction is achieved when loaded.

### Superior lifting geometry

With the TH7.32 the boom compensation cylinder faces rearward near the hinge point and both cylinders extend in opposite directions as the boom is raised. This "opposite working" design greatly improves boom control and overall stability.

The lower centre of gravity and longer 3m "corner to corner" wheelbase concept, along with the rear-mounted boom acts as a built-in counterbalance making this telehandler hard to beat. It can lift objects as high as 7m and has a 3,2t capacity.

### Outstanding engine power and hydraulics

The TH 7.32's turbocharged 4,5 litre 4 cylinder engine is Tier 3 compliant, with outstanding power output of 98kW and 549Nm of torque at 1 500 r/min, allowing it to handle any task comfortably.

Powerful hydraulics ensure that a high performance variable displacement piston pump delivers a maximum of 140 litre/min, providing versatility in all conditions with two optional front auxiliary hydraulic outlets and additional rear auxiliary lines.

"The New Holland TH 7.32 telehandler is a great choice for lifting and material handling on the farm thanks to greater lift capacity, better reach, faster cycle time and the highest manoeuvrability and stability working with loads. With all the power and torque a farmer needs to perform the most intensive tasks on all terrains, together with exceptional fuel efficiency, this new model will get the job done quickly and efficiently," Du Preez added.

**Contact your New Holland agent for more information on this product.**

#### KwaZulu-Natal

- *Darin Martens: 079 873 7310*
- *Neil Blaylock: 082 673 1033*
- *Stuart Ramseyer: 082 859 5752*
- *Roy Meier: 076 042 4427*

#### Mpumalanga

- *Joe Filter: 082 662 7706 (Northern KZN)*
- *BJ Moolman: 072 593 8648*
- *Corné Laas: 072 818 8911*
- *Kevin Worth: 082 415 0978*
- *Christo Odendaal: 072 383 5371*
- *Gerhard Malan (Rudamans): 066 301 6844*



**Dixon**  
PREMIUM BATTERIES



**086 003 4966**

[www.dixonbatteries.co.za](http://www.dixonbatteries.co.za)



# ***The new financial obligations for business entities***

A walk through some of the acronyms and what they mean for your business under new financial regulation laws in South Africa.

## **The new dictionary**

The most prominent acronyms in relation to new financial regulations are:

- FATF: Financial Action Task Force
- FICA: Financial Intelligence Centre Act
- POCA: Prevention of Organised Crime Act
- POCDATARA: Protection of Constitutional Democracy against Terrorist and Related Activities Act
- FIC: Financial Intelligence Centre
- AML: Anti Money Laundering
- TFA: Terrorist Financing Activities
- PFA: Proliferation Financing Activities
- AI: Accountable Institution
- RMCP: Risk Management Compliance Program
- CDD: Customer Due Diligence
- SL: Sanctions List
- AM: Adverse Media
- FPEP: Foreign Politically Exposed Person
- PIP: Prominent Influential Persons
- DPEP: Domestic Politically Exposed Person



This is a short introduction to what these acronyms mean and why they are important to know in relation to financial regulation in South Africa.

- **FATF** is the global money laundering and terrorist financing watchdog. It sets International Standards that aim to prevent these illegal activities and the harm they cause to society.

- **FICA** is one of three Acts which work together to combat and criminalise money laundering, as well as the financing of acts of terrorism, to make the country safer for all SA citizens. FICA came into effect on 1 July 2003 and was updated in 2017 by the Financial Intelligence Centre Amendment Act.

FICA was introduced to fight financial crimes, such as money laundering, tax evasion, and terrorist financing activities by making it more difficult for criminals to benefit from the proceeds of crime. The 2017 Amendment Act brings South Africa closer to International Standards and the best practices recommended by FATF.

- **POCA** focuses on combating organised crime and prohibiting activities relating to racketeering and money laundering.
- **POCDATARA** is focussed specifically on the criminalisation of terrorist financing activities and the freezing of assets that may be used to support the execution of terrorist activities.
- **FIC**, the Financial Intelligence Centre, is the main regulatory mechanism in South Africa. The Centre exists to apply measures outlined in FICA, which are intended to make the financial system intolerant to abuse. It does this by working towards fulfilling its mandate of assisting in identifying the proceeds of crime, combating money laundering, the financing of terrorism and the proliferation of weapons of mass destruction.

### Now that you have the skeleton, let's put some meat on the bones:

In terms of FICA certain types of businesses are obliged to adhere to FICA. However, there are also some sections in FICA that apply to ALL businesses, irrespective of the type of business. There is a Schedule 1 to FICA; this Schedule was amended in December 2022, and the Schedule lists the types of businesses that must comply with FICA.

There are 23 types of businesses that must comply, and they are listed as "items" on Schedule 1. This article concentrates on four that affect our daily lives as citizens. It should be noted that the term "businesses" is a wide definition in FICA and does not only refer to a legal entity; it also refers to an Individual doing that business as his/her business.

### Accountable Institutions

Should a business fall within any of the Items on Schedule 1 of FICA they are regarded as AIs (Accountable Institutions).

### The first 4 AIs, that must comply fully with FICA, that we will look at are:

1. **Item 1:** A person who is admitted and enrolled to practise as a legal practitioner as contemplated in the Legal Practice Act and who is an attorney or an advocate or a commercial juristic entity delivering Legal services.
2. **Item 3:** An estate agent as defined in the Estate Agency Affairs Act.
3. **Item 11:** A person who carries on the business of a credit provider as defined in the National Credit Act.
4. **Item 20:** A person who carries on the business of dealing in high-value goods in respect of any transaction where such a business receives payment in any form to the value of R100 000 or more. "High-Value Goods" means any item that is valued in that business at R100 000 or more.

Items 1 and 3 are self-explanatory, so let's zoom in on Items 11 and 20.

Item 11 - any person that owes another money and the terms of that agreement include that the money is repaid at a later date and there is a charge (mostly called "interest") for the deferment of the re-payment.

The agreement may also include that if the money is not re-paid on the due date, interest should be paid on the monies not paid on time.

Such a Lender would fall under Item 11 of Schedule 1 of FICA.

#### For clarification:

If a person or business lends money to another (including staff loans) and charges interest (or provides for interest in the event of non or late re-payment), then that entity is regarded as a Credit Provider and must register under Item 11 of Schedule 1 of FICA.

Item 20 - any business, remember it includes Individuals doing business in their own name, that have an item (excluding services) to the value of R100 000 or more for sale would fall under Item 20 of Schedule 1 of FICA.

#### For clarification:

If the business of a person is "farming" and that person sells any item (for instance a bull) that is worth R 100 000 or more, then that entity is regarded as a High Value Goods Dealer, and you must register under Item 20 of Schedule 1 of FICA.

**"Accountable institutions must register with the FIC to avoid attracting increasing administration sanctions."**

## Your obligations as an AI

The obligations, in terms of FICA that an AI has are:

- To register with the FIC as an AI.
- To appoint an AML Compliance Officer.
- To develop, document, maintain and implement FICA's risk-based approach.
- To develop internal processes consistent with the obligations under FICA in terms of a RMCP.
- To establish and verify the identity of clients and risk rate clients accordingly.
- To understand the nature and purpose of a transaction/relationship as well as the source of funds.
- To screen clients against sanctions watchlists, as well as screen for DPEPs, FPEPs and PIPs.
- To keep records of business relationships and transactions.
- To report receipts of cash over R49,999.
- To report suspicious transactions or activities to the FIC.
- To offer compulsory FICA training to all employees.

**"FICA provides the necessary justification in law that AIs require to obtain and process personal information."**

### Data Privacy

The South African data privacy legislation is POPIA (the Protection of Personal Information Act). POPIA promotes the protection of personal information and special personal information processed by public and private bodies and sets conditions for obtaining, using, and processing of such information.

The FIC Act applies in a mutually non-conflicting manner to the principles of POPIA. FICA provides the necessary justification in law that AIs require to obtain, process and further process personal information and special personal information in terms of the POPIA.

## Things to note

It is important to note that some entities may be required to register more than once with the FIC, should they perform activities in more than one item, as listed in schedule 1 of the FIC Act. As communicated by the FIC and in media, registration with the FIC is compulsory for these sectors.

FICA also provides that an AI may outsource certain functions (not responsibilities) to a third-party service provider.

### Late registration with the FIC

The 90-day non-penalty window for various new and other identified accountable institutions to register with the FIC closed on 20 March 2023.

Amendments to Schedule 1 to FICA, came into effect from 19 December 2022. The amendments included the requirement for new and other identified categories of persons that were added to the list in Schedule 1, to register with the FIC within 90 days of being added to the list.

Accountable institutions that have not yet registered with the FIC in respect of all the items in which they conduct business, are currently non-compliant with the FIC Act and are required to immediately register with the FIC to avoid attracting increasing administration sanctions for non-compliance and late registration.

**Contact CR Trustees to be your FICA Compliance Partner:**

[www.crtrustees.co.za](http://www.crtrustees.co.za)

**Eugene Joubert at 0829260251 ■**

**"Some entities may be required to register more than once with the FIC, should they perform activities in more than one item."**





# IMPAC *CropSure*

## IS JOU GRANE VERSEKER?

Niemand kan die toekoms voorspel nie, maar ons kan dit vir jou beskerm

### **Inkomstewaarborg**

Hierdie versekeringsproduk is gegrond op 'n gewaarborgde inkomste en verseker die produsent teen randwaarde per hektaar.

Twee veranderlikes word dus tydens eise in berekening gebring naamlik: Prys (SAFEX) en Opbrengs (Ton). Dekking is vir Mielies, Sonneblom en Sojabone.

### **Watter soort skade word gedek?**

Droogte, Brand, Hael, Transito, Vloed, Oormaat Reën, Onbeheerbare plantsiektes en -insekplae, Oormatige hittegolwe en Ryp.

### **Is alleenstaande haeldekking beskikbaar?**

Ja, iMPAC Cropsure bied ook alleenstaande haelversekering.

### **Gewasse hieronder gedek sluit in:**

Mielies, Graansorghum, Sonneblom, Sojabone, Droëbone, Grondbone, Aartappels en Katoen.

### **Wat is wintergewasse?**

Koring, Gars en Hawer.

### **Watter soort skade word gedek?**

Hael, Brand en Transito, asook Ryp indien ingesluit.

Vir meer inligting kontak u agent of  
iMPAC Cropsure:



+27 [0] 12 010 0697



info@impaccropsure.co.za

**Most farmers find winter the most difficult season because of the pressure it puts them and their workers, and on their livestock. These winter reminders can make it easier.**

# SHIVERS, SNOW AND LONG PELTS

**F**reezing cold, strong winds roar around corners and cut to the bone, while shades of white, yellow and brown dot the horizon. Blankets of white snow and even pieces of scorched earth can be seen from time to time.

It takes a lot to survive the winter, it isn't as forgiving as other seasons.

During winter, numerous areas in South Africa get seasonal snow and even icy rain. When farming with livestock, snow is a tremendous worry especially for animals who live outside.

Both small and large livestock will need to be checked on during cold periods in general, but when temperatures drop well into the minus numbers, and there is snow and icy rain (and even if it is a normal cold spree without the white dustings), animals will need higher levels of nutrition and more shelter.

That's because you want them to do more than barely survive.

## Licks and extra feed

Proper nutrition (this includes lick) is vital for the survival of your animals throughout winter as well as the productivity of your animals.

Young heifers, for example, should get a lick that prepares them for the upcoming breeding season, but their requirements differ from cows that are in production with calves.

If you are not quite sure or haven't decided on a lick or extra feed, speak to someone at your local TWK, a feed rep or consider looking at the Molatek and Voermol mobile apps.

There are lambing and calving periods during winter which means a number of young and vulnerable animals will need extra attention. Ensure that young, weak and older animals have sufficient feed, shelter and that they are all as healthy as possible during this time.

Using a good maintenance plan for your livestock, will help you stay on top of your animals' health.

Vitamins and minerals also have an important role (for young, old and sick animals), but they are quite often overlooked or used incorrectly. They can greatly improve your herd's health when used correctly, so do take the time to discuss their uses with your local TWK branch assistant.

## Preparing for warmer times

Whilst winter is ongoing, there are a few things that need to be done for your livestock to not just keep them healthy, but also prepare them for the upcoming spring and summer seasons.

Before and during the winter breeding season, make sure to check that animals are in healthy breeding condition. Make an appointment with your veterinarian to test your bulls and rams before putting them in with your female animals.

By the end of winter, during August, male breeding animals will have to be tested once again for the summer breeding season.

If you are using the same animals (rams and bulls) during the summer breeding season that were used during winter, you will need to give them at least two weeks after they were moved out of the breeding herds before they are tested by the veterinarian, to get an accurate fertility test result.

They will also require proper feed to build up reserves once again as breeding seasons do take a lot out of these animals.





# KWALITEIT SAAD ... KWALITEIT OPBRENGS!



WITMIELIEBASTERS:

/// DKC75-65BR

/// DKC76-77BR

## 'N KEUR VAN KWALITEIT WITMIELIEBASTERS VIR HIERDIE SEISOEN

Ons bied jou net die beste saad om jou te help om beide jou opbrengs en winsgewendheid te optimaliseer. Al ons witmieliebasters word gerugsteun deur gevorderde genetika en bied die bykomende voordele van **Acceleron**®-saadbehandeling om te verseker dat jou gewasse van meet af beskerm word. Tesame met die voordele van ons uitgebreide reeks van gewasbeskermingsprodukte, bied ons 'n gekombineerde oplossing om jou te help om jou sukses hierdie seisoen te plant.

Ontdek wat die **#DEKALBverskil** vir jou kan doen by **dekalb.co.za**.

Bayer (Edms.) Bpk. Reg. Nr. 1968/011192/07. Wrenchweg 27, Isando, 1601. Posbus 143, Isando, 1600.



## Diarrhea and pneumonia

Having had the opportunity to listen to veterinarians and specialists speak during a recent Virbac farmers' day, some interesting points on animal health as well as pasture health came up.

Two of the major reasons why calves and lambs die (sometimes extremely quickly) are diarrhea and respiratory problems (pneumonia).

Whether farming intensively or extensively, these kinds of losses occur even when you try do everything right. The earlier they are picked up, the easier it is to prevent further damage to the animals and save their lives.

When it comes to diarrhea amongst calves and lambs, it is more than just one thing that can be the cause. When treating sick animals, unless you are completely sure (having done a faeces test via your veterinarian), you are never really secure.

Different infections (viruses and bacterial infections) have to be treated differently. If

you keep on treating animals with the same antibiotic, the viruses and bacteria will end up becoming immune.

This is one of the main reasons why it is so important to work with your veterinarian and keep track of what type of medicine you use on your livestock.

Checking sick animals' temperatures is very important. It gives you more information that just whether or not the animal has a fever. For example, when a calf or a lamb has a high fever with their diarrhea, it actually means there is a slightly higher chance of them surviving.

This is because their immune systems are still active. Lower than normal temperatures usually mean the prognosis isn't all that well (the calf or lamb's body has started giving up on itself).

### Parasite treatments

Parasites wreak havoc throughout the year and unfortunately the winter months are not without problems. From young to old, all ages of animals can suffer from them.

During the winter months, there are some parasites that thankfully die (they have different life cycles), but the moment temperatures heat up again, they are back in full swing.

Certain products are extremely well developed and can be used for a number of parasite infestations, but when it comes to parasites like wireworm, they might not work.

The important thing to remember when treating parasites, is the same as when treating diarrhea: overusing the same medicine will cause parasites to become immune. Use

**"Using a good maintenance plan for your livestock, will help you stay on top of your animals' health."**

**"Make an appointment with your veterinarian to test your bulls and rams before breeding season."**

**"When treating parasites and diarrhea, don't overuse the same medicine."**

## Symptoms to keep an eye out for with diarrhea:

- **Sunken eyes**
- **Dirty tail area (take note of the colour, for example yellow or black as well as the texture)**
- **Skin that does not go back into position shortly after when pulled**
- **Ears will be hanging and cold**
- **In most cases temperatures will start out high (you will actually have a better opportunity to save them when they have a fever)**
- **Lifeless behaviour (standing still or laying down) – this is usually one of the last symptoms**





# Sunshine

## SEEDLING SERVICES



Do you require  
**TIMBER SEEDLINGS?**

PLACE YOUR ORDER  
and pay your deposit before  
the 30<sup>th</sup> of June 2023,  
**TO GET A 10% DISCOUNT**  
on your seedlings.

[www.sunshinseedlings.co.za](http://www.sunshinseedlings.co.za)

Tel: 033 390 3047 • Cell: 082 899 3195



# Staalmeester



Finance  
Available

## CONTACT US TO FIND YOUR NEAREST AGENT

**Hendri de Korte** ☎ + 27 62 392 1748 (Cape Provinces & Exports)  
**Cornel Scholtz** ☎ + 27 78 749 9660 (Northern Cape & North West)  
**Bertie Mienie** ☎ + 27 82 927 8214 (Mpumalanga & Limpopo)  
**Spare parts** ☎ + 27 18 431 2171/2

## HEAD OFFICE

🏠 2 Coetzee Street, Hartbeesfontein  
PO Box 71, Hartbeesfontein, 2600

🌐 [www.staalmeester.co.za](http://www.staalmeester.co.za)

☎ + 27 18 431 2171/2

✉ [info@staalmeester.co.za](mailto:info@staalmeester.co.za)



### 6116 RS Hammer Mill

Designed to use 40% less power than competitors and is fitted with a blower system to bag material at a very high capacity.



### JF Kanguru 270 Grain Bagger

A mobile station for storage of grains or fertilizers, take it wherever you need.



### JF 1600 AT Forage Harvester

Chainless & beltless transmission. Articulate frame with 2 supporting wheels.

We have more than 100 different agricultural products in stock that suit all farmers' needs.

Call us today or visit [www.staalmeester.co.za](http://www.staalmeester.co.za)



Proud Dealer



different products (take note of the main ingredients) and cater your treatments for different problems.

### Knowledge is key

Health problems do not occur during specific seasons; they can occur throughout the year. The type of infection can differ, but animals can have similar symptoms that farmers and workers have to identify.

There are certain products that you will be able to buy at your local TWK branch for your livestock, and there are a wide variety of products available.

However, other medicinal products can

only be dispensed and even only used by veterinarians.

The key to getting the right diagnosis and getting the right medication to the animals, starts with the farmer and his (or her) workers knowing what they are looking for.

When you get invited to a farmers' day in your area or you see an advert for one, it's worth attending. There are always new products available (some are improvements on older products) and some older products that are still in use.

You may learn something about diseases and hear about other problems farmers faced that were resolved. This could help you prevent your own losses.

Farmers don't stand alone. They form part of a community. Farmers, workers, co-operations like TWK, veterinarians and even reps for feed groups and medicine groups all bring something to the table.

Never be shy when you want to ask a question; it might just help keep your herd alive and prosperous.

By Cornelia Vermaak ■

Buy any  
Montego  
**Classic**  
Dry Food In-Store  
and you could win a  
**TOYOTA HILUX**



**AT ANY TWK RETAIL STORE**

One lucky winner will drive away in a brand-new Chromium Silver Toyota Hilux 2.4GD6 4x4 Raider Automatic double cab including nudge bar, tow bar, roll bar and rubberising, valued at R738,000.00.

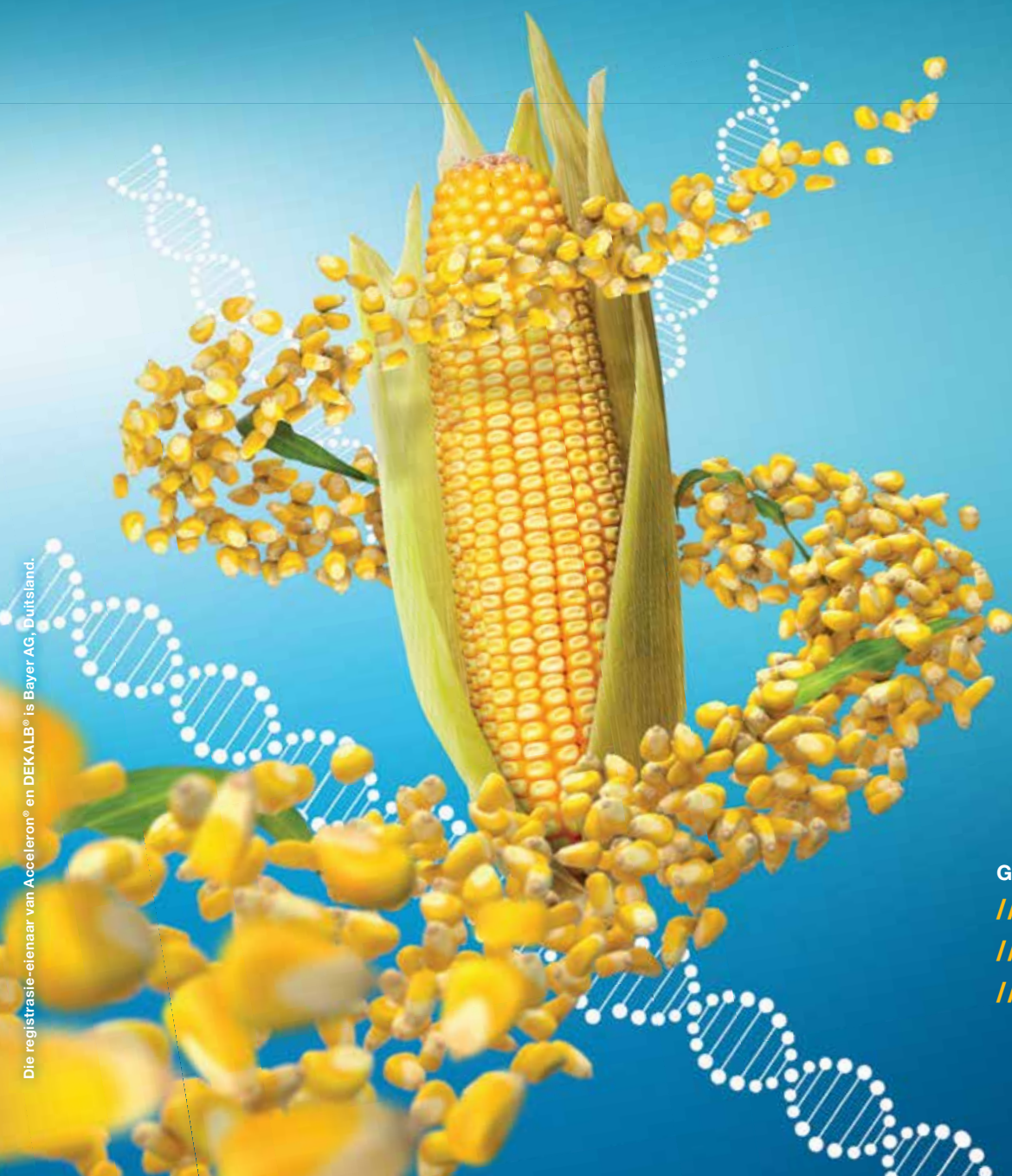
Ts & Cs Apply. Visit [Montego.co.za](http://Montego.co.za) for more info.







# ONS HET DIE OPLOSSING



## GEELMIELIEBASTERS:

/// DKC72-76BR

/// DKC77-26BR

/// DKC78-78BR

## 'N KEUR VAN KWALITEIT GEELMIELIEBASTERS VIR HIERDIE SEISOEN

Wat beteken dit om 'n boer te wees? Dit beteken om voortdurend met besluite gekonfronteer te word wat die produktiwiteit en winsgewendheid van jou plaas beïnvloed. Kom ons maak jou saadbesluit 'n maklike een! Ons geelmieliebasters het almal unieke eienskappe om aan die spesifieke behoeftes van jou plaas te voldoen. Met gevorderde genetika sowel as die bykomende beskerming van **Acceleron**<sup>®</sup>-saadbehandeling, kan jy verseker wees dat jou gewasse van meet af beskerm word.

Ontdek wat die **#DEKALBverskil** vir jou kan doen by [dekalb.co.za](http://dekalb.co.za).

Bayer (Edms.) Bpk. Reg. Nr. 1968/011192/07. Wrenchweg 27, Isando, 1601. Posbus 143, Isando, 1600.



# The Healer's Horn

**The discovery of a 500-year-old medicine horn in the Eastern Cape is the first evidence of multiple ingredients being combined into a single recipe for medicine.**

In 2020, a chance discovery by a hiker in the mountains near the small hamlet of Misgund in the Eastern Cape brought to light an unusual parcel. The parcel, which had been partly unearthed through animal activity in the rock shelter, was a cow horn, capped with a leather lid and carefully wrapped in grass and the leafy scales of a Bushman poison bulb (*Boophane disticha*).

Inside the horn were the solidified remnants of a once-liquid substance. Thinking that the contents of the horn container might be paint used to produce the rock art on the shelter walls or perhaps even a hunting poison, the container was sent to the Palaeo-Research Institute at the University of Johannesburg for analysis.

Carbon dating placed the horn at 500 years old. Using a molecular detection technique known as gas chromatography tandem mass spectrometry to analyse the contents of the horn container, several secondary plant metabolites were identified, the most abundant of which were mono-methyl inositol and lupeol. Both these compounds, and indeed all of those identified, have known medicinal properties. This makes the horn contents the oldest medicine yet discovered in southern Africa.

## Plants as healing agents

Although people have exploited the pharmacological properties of plants for at least the last 200 000 years, they have done so

using single ingredients. For example, during the Middle Stone Age, people burnt certain aromatic leaves to fumigate their sleeping areas.

Plant exudates also seem to have been the main component of hafting adhesives and hunting poisons around this time.

However, the Misgund discovery is the first evidence we have of multiple ingredients being combined into a single recipe for medicinal purposes.

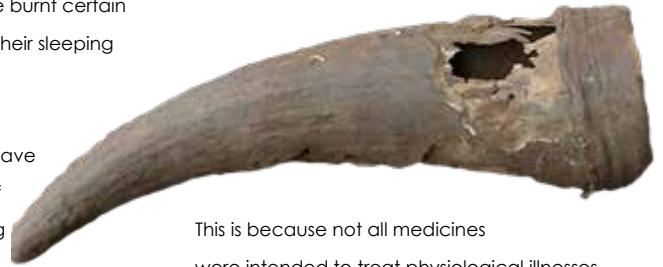
At present we know very little about traditional medicines from the pre-colonial era. What information we do have derives mainly from early traveller accounts and modern ethnographic studies.

In addition, traditional medicine is highly adaptive and continues to play an important role in much of Africa as a primary health service.

In many of these cases, however, the plants used in traditional medicines have no pharmacological efficacy over the ailments they are administered to treat.

Medicinal ingredients are often combined in any ratio and in any quantity and administered in any way deemed appropriate by the healer, without necessarily being medicinally effective.

*The medicine horn fully unwrapped. The damage is due to insect activity.*



This is because not all medicines were intended to treat physiological illnesses. Khoisan healers were specialised individuals whose task was to treat both physical and spiritual ailments.

Indeed, one of the principal functions of traditional medicine is to treat supernatural bewitchment, and in this way, medicine and culture have been intimately entwined.

## What was the medicine in the horn?

The discovery of the medicine container in a painted rock shelter in the Eastern Cape gives us our first insights into pre-colonial medicines.

We know the region was inhabited 500 years ago by Khoi pastoralists and San hunter-gatherers. Although the rock shelter contains several San paintings we do not know if they are contemporary with the horn container.

By the nineteenth century both groups are known to have shared a belief in a mythical animal, resembling a domestic cow, whose horns were considered to have medicinal attributes.

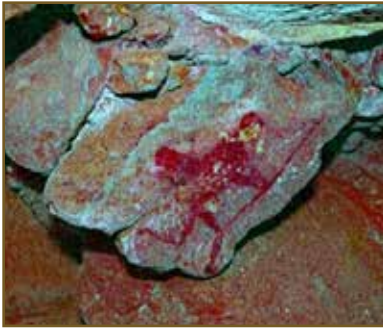


*The discovery of the horn taken at various stages of unwrapping the parcel.*



*Some of the plants that are thought to have been used to make the medicine.*





Some of the Bushman paintings found inside the rock shelter.

traditional medicines used in the Eastern Cape 500 years ago.

The results of the chemical study were published in the South African Journal of Science in January 2023.

By Prof. Justin Bradfield, Associate Professor Palaeo-Research Institute, Editor, Field and Technical section, South African Archaeological Bulletin ■

The main compounds present in the container, mono-methyl inositol and lupeol, are found in a variety of known medicinal plants in the Eastern Cape and have a wide range of recorded medicinal applications, including the control of blood sugar and cholesterol levels, treatment of fevers, inflammation and urinary tract infections, and may be applied topically to treat infections.

In fact, rubbing ointment into subdermal cuts in the skin is one of the ways the San are known to have administered certain medicines.

Both mono-methyl inositol and lupeol are pharmacologically safe compounds, meaning they can be ingested without risk of overdose.

Both compounds stimulate the production of dopamine in the brain, with the former being used to treat anxiety, and plants containing the latter being used as aphrodisiacs.

Although we cannot know exactly what the medicine was used for, how it was administered, or who precisely used it, it was clearly a treasured possession, since it was carefully wrapped and deposited in the rock shelter. Its owner evidently intended to retrieve it, but never returned.

The absence of any other archaeological deposit at the site means that the medicine horn is an isolated, chance discovery, but one which nevertheless sheds new light on

**“Khoisan healers were specialised individuals whose task was to treat both physical and spiritual ailments.”**

**“The horn was clearly a treasured possession, since it was carefully wrapped and deposited in the rock shelter.”**



## PALAEO-RESEARCH INSTITUTE

### What do we offer?

- Highly integrative projects that require a willingness to embrace multiple disciplines and close collaborations with other researchers with different backgrounds.
- State-of-the-art equipment.
- An excellent research environment.
- A structured training programme.

To find out more please write to Dr Dipuo Kgotleng, Director of the Palaeo-Research Institute at [dkgotleng@uj.ac.za](mailto:dkgotleng@uj.ac.za).

# Interested in studying Palaeoscience?

The Palaeo-Research Institute is a pan-African research hub located in the Faculty of Humanities at the University of Johannesburg. The institute is dedicated to the exploration and understanding of the ancient past, with a particular focus on the evolution of early hominins. We are a multi-disciplinary group with an extensive international training and research collaborative network. We represent a holistic approach to human evolution in sub-Saharan Africa covering the past 4 million years.





# BASJAN SE BOOMHUIS

## BRILJANTE BORRELS

*Kinderstorie deur Jaco Jacobs  
Illustrasies deur Johann Strauss*

Op Basjan-hulle se plaas is 'n boom.

'n Groot ou boom met digte blare.

Dis die perfekte boom om kaalvoet in rond te klouter.

En in hierdie boom is Basjan se boomhuis.

Basjan se boomhuis is die beste plek op aarde om te speel, skatte weg te steek, te dagdroom, planne te maak ... of weg te kruip as Ma jou roep om huiswerk te kom doen!

Vandag is Saterdag. Basjan het nie huiswerk om te doen nie. Daaroor is hy baie bly. Maar die probleem is, Basjan het ook niks anders om te doen nie. Hy is verveeld.

Sy biblioteekboeke is klaar almal deurgelees. Strepies, sy muishondmaat, lê al die hele oggend en slaap in 'n lekker sonkol in die wintersonnetjie. Die tweeling, Nandi en Neville, wat op die buurplaas bly, is vanoggend saam met hulle ma dorp toe om nuwe skoolskoene te koop, so hulle kan nie oudergewoonte by Basjan kom kuier nie.

Basjan drentel kombuis toe. Dalk is daar iets om te doen.

Mamma is in die kombuis, besig om iets uit die oond te haal. Dit ruik lekker.

"Kan ek help met iets?" vra Basjan. Dalk kan hy help om deeg te meng, eiers te klits – of lepels af te lek!

"Nee, dankie, nie nou nie, Basjan," sê Mamma. "Pasop, die bakplaat is baie warm! Gaan speel liever 'n bietjie buite – jy kan later van die koekies kry wanneer dit afgekoel het."

Basjan sug en stap buitentoe. Hy kyk rond.

Die skuur se deur staan oop. Hy hoor 'n gekap. Pappa is besig om aan een van die trekkers te werk. Sy blou oorpak is vol olievlakke.

"Kan ek help met iets?" vra Basjan.

"Nee, dankie, nie nou nie, Basjan," sê Pappa. "Pasop, jy gaan jou skoon klere vol olie smeer! Gaan speel liever 'n bietjie buite – jy kan later vanmiddag saam met my lande toe ry."

Basjan sug en stap weer buitentoe.

Karliën, sy ousus, is buite in die tuin. Basjan frons. Wat doen sy? Sy loop stadig op haar tone terwyl sy stip in 'n boom opkyk. Dit lyk amper of sy iets bekruip.

“Wat doen jy, Karliën?” vra Basjan.

Skielik is daar 'n gefladder bo in die boom.

“Urrrgh!” brom Karliën en kom regop. “Basjan, ek probeer 'n foto van 'n houtkapper neem. Nou het jy hom laat wegvlieg.”

“Jammer,” sê Basjan. Hy sien nou eers Karliën se kamera. “Ek het nie geweet jy probeer 'n foto neem nie.”



Karliën knik.

“Ja,” verduidelik sy, “ek het by die skool gehoor van 'n fotokompetisie. Skoolkinders kan groot pryse wen met hulle foto's. Maar ek sukkel om iets moois te kry om af te neem. Die kompetisie sluit Maandag, so ek het nie baie tyd nie.”

“Kan ek jou help?” vra Basjan.

“Ja, asseblief,” sê Karliën. “Bly groot asseblief uit die pad en moenie weer die voëls wegjaag as ek een probeer afneem nie. Dit sal my sommer baie help.”

“Maar ek is verveeld!” kla Basjan.

Karliën klik haar tong vies.

“Ag, Basjan, gaan blaas borrels of iets!” sê sy.

Basjan steek vir haar tong uit, maar sy sien dit nie eens nie – sy stap klaar weg om iets anders te gaan soek om af te neem.



Basjan sug. Hy stap weg en gaan klim in sy boomhuis. Hy voel sommer baie jammer vir homself. Niemand het tyd of lus om iets saam met hom te doen nie. Almal is te besig.

“Basjan!” roep 'n stem.

“Is jy daar bo?” roep 'n tweede stem.

Basjan vergeet sommer dadelik hoe jammer hy vir homself voel. Hy ken daardie stemme.

Dis Nandi en Neville! Die tweeling bly op die buurplaas, maar dit is naby genoeg dat hulle sommer hierheen kan stap om te kom kuier.

“Klim op!” roep Basjan. “Het julle klaar skoolskoene gekoop?”

Neville se gesig loer bo die boomhuis se leer uit.

“Ja,” brom hy en kom sit langs Basjas. “Dit was sooo vervelig. My ma en Nandi was ure lank in die skoenwinkels.”

Nandi loer ook by die boomhuis in. “Is nie!” sê sy. “Dit was jou skuld omdat ons nie skoene kon kry wat aan jou groot voete pas nie.”

Basjan bars uit van die lag. Nandi en Neville is nou wel 'n tweeling, maar hulle kan vreeslik lekker stry!

“Wat doen jy vandag, Basjan?” vra Neville.



Basjan gee sommer weer 'n sug – hy dink nie hy het al ooit so baie op een dag gesug nie.

“Ek is baie bly julle twee is hier, want ek is vreeslik verveeld,” sê hy. “My ma en pa en Karlien is almal te besig om iets saam met my te doen. Karlien het gesê ek moet gaan borrels blaas!”

Dit is die tweeling se beurt om te lag.

“Ek dink glad nie dis snaaks nie,” brom Basjan. “Karlien hou haar sommer net groot.”

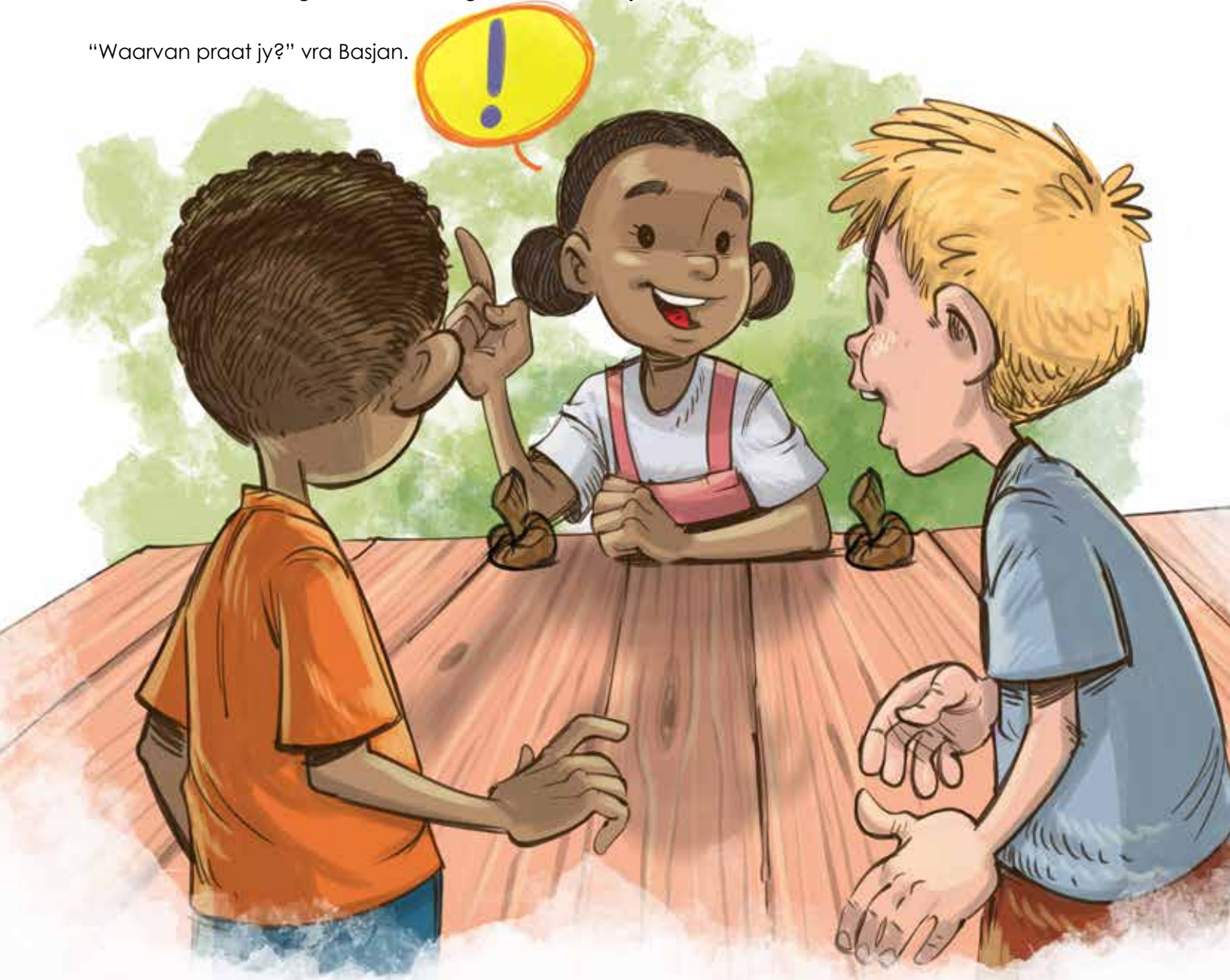
“Wag 'n bietjie ...” sê Nandi.

Sy kry skielik 'n vreemde glinstering in haar oë. Basjan ken al daardie glinstering – dit beteken gewoonlik dat Nandi besig is om een van haar slim planne uit te dink.

“Wat?” vra Basjan.

“Dalk is borrels blaas glad nie so 'n slegte idee nie, Basjan,” sê Nandi.

“Waarvan praat jy?” vra Basjan.







Nandi glimlag. “Ek het pas 'n briljante plan gekry. My ma het my nou die dag 'n video op YouTube gewys. Dink jy jou ma sal omgee as ons van haar skottelgoedseep gebruik?”

'n Paar minute later is die drie maats op die grasperk onder die boomhuis. Basjan het 'n skottel met water, 'n bol oorskietwol, 'n ou draadhanger, skottelgoedseep en gliserien bymekaargekry, nes Nandi verduidelik het. Mamma het glad nie omgee om vir hulle die bestanddele te gee nie – dit het gelyk of sy maar net te bly is dat Basjan iets gekry het om hom besig te hou.

Nandi meet die gliserien met 'n teelepel af en roer dit by die mengsel. “Neville, jy en Basjan moet die draadhanger oopbuig, asseblief. Maak dit mooi rond.”

Toe die mengsel klaar is, wys Nandi die seuns hoe om wol al om die draadhanger te draai. Daarna druk sy die hanger in die skottel ... en swaai dit deur die lug.

Basjan se mond val oop.

Nandi maak 'n reusagtige borrel! Reënboogkleure skitter daarop. Dit is so groot dat Basjan amper binne-in kan pas. Strepies piep opgewonde en hap na die borrel. Basjan lag toe die borrel bars. Die seep laat vir Strepies nies!

"Kan ek probeer?" vra Basjan vir Nandi.

Die drie maats maak beurte om reuse-borrels te maak. Dit is vet pret!

"Sjoe, daai borrels is fantasties!" roep iemand uit. "Ek het nog nooit sulke groot borrels gesien nie."

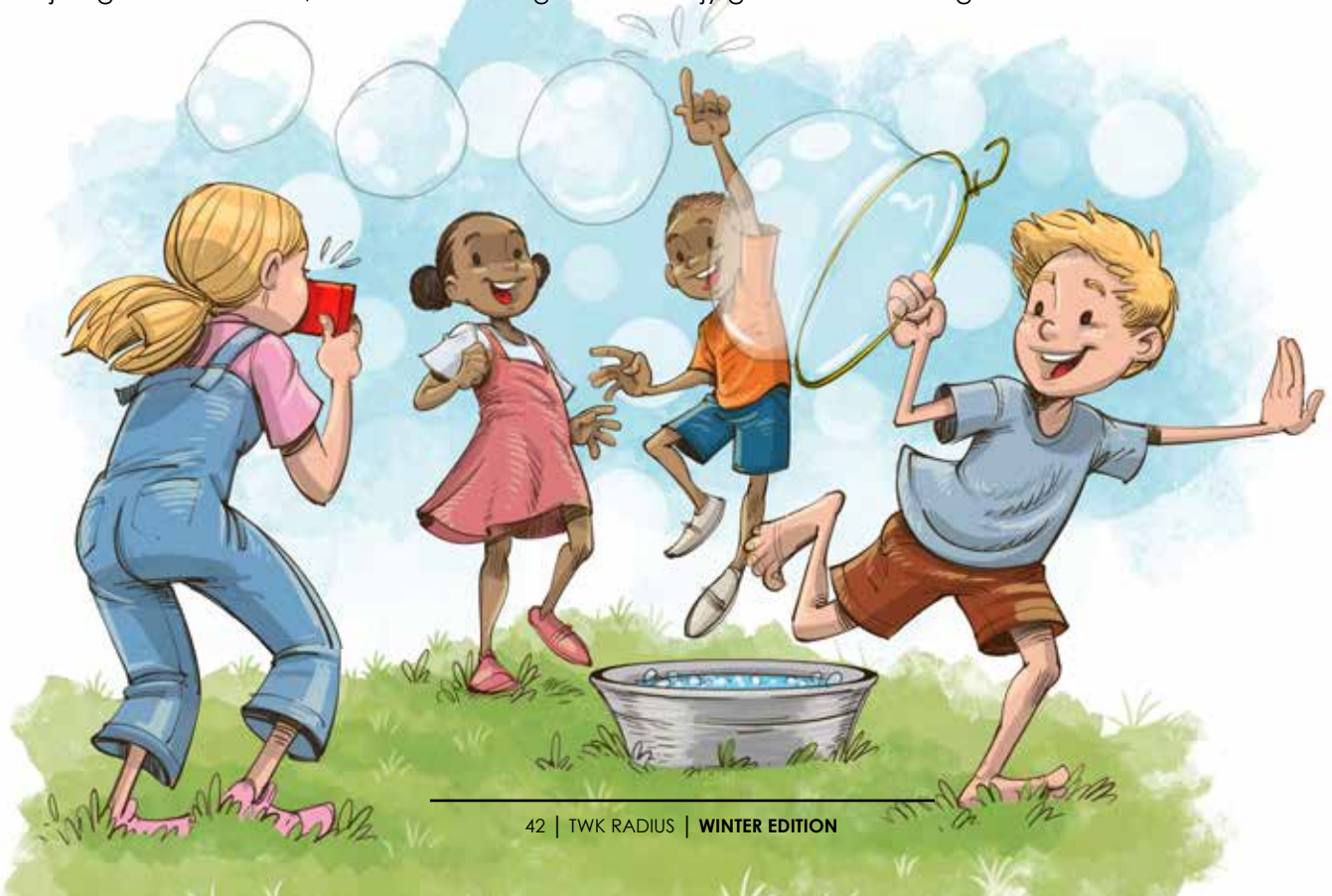
Dit is Karlien. Sy kom met haar kamera nader gedraf.

"Basjan, mag ek asseblief foto's van die borrels neem?" vra sy. "Dit is so mooi as die lig sulke reënboë op die borrels maak."

Mamma kom uit die kombuis gestap om na die borrels te kyk – sy het nog haar oondhandskoene aan. Pappa kom uit die skuur – hy vee sy oliegerige hande aan sy oorpak af. Almal staar glimlaggend na die borrels.

Karlien neem hope foto's. "Kyk hier!" roep sy uit. Sy wys vir Basjan-hulle haar kamera se skerm. "Kyk net hoe mooi is die foto's. Ek is seker ek gaan 'n prys hiermee wen! Dankie, Basjan – en jammer ek was lelik met jou."

Basjan grinnik net. "Wel, ek het maar net gedoen wat jy gesê het – ek het gaan borrels blaas!"





# HOE OM JOU EIE REUSEBORRELS TE MAAK

Is jy verveeld? Gaan blaas borrels net soos Basjan! As jy reusagtige borrels soos Basjan-hulle wil maak, gaan jy jou eie borrelmengsel en 'n spesiale borrelblaser nodig hê.

Vir die borrelmengsel benodig jy:

- 1 koppie skottelgoedseep
- 4 teelepels gliserien
- 1 liter water

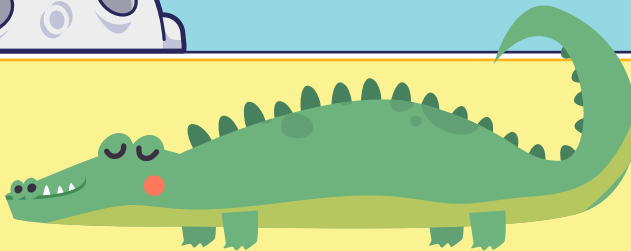
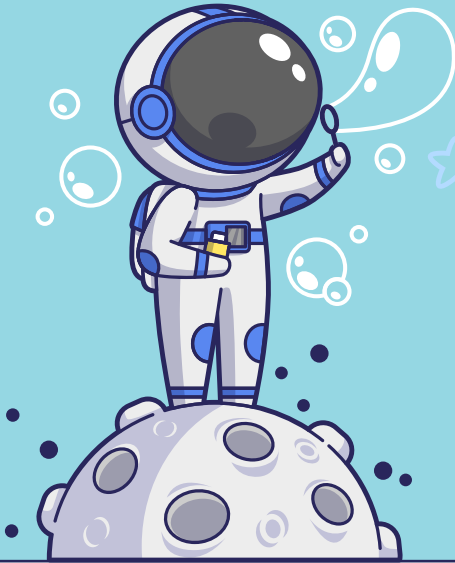
Voeg die skottelgoedseep by die water en meng dit liggies. Voeg die gliserien by. Vir die beste borrels moet jy loutwarm water gebruik en die mengsel oornag laat staan.

Vir die borrelblaser benodig jy:

- 'n draadhanger
- wol

Buig die draadhanger oop. Vra 'n grootmens om te help as jy sukkel. Draai nou wol al om die oopgebuigde deel van die borrelblaser.

Gooi die borrelmengsel in 'n vlak skottel of bak wat groot genoeg is dat jou borrelblaser daarin kan pas. Doop die borrelblaser in die borrelmengsel – en swaai dit deur die lug om reuse-borrels te maak!



## ANIMAL BLOCKS

Use all the letters in each word block to make the name of an animal. Start with the letter in the blue block.

1.

I	C	O
D	C	E
R	O	L

2.

I	O	N
P	P	U
C	R	E

3.

E	P	I
E	C	N
D	E	T

4.

H	I	L
Y	J	S
E	F	L

5.

R	L	T
A	T	U
A	A	N

## GRAPJAS



Wat het die termiet en sy vrou in die restaurant bestel? 'n Tafel vir twee.



Aan watter kant het 'n krokodil die meeste skubbe? Die buitekant.

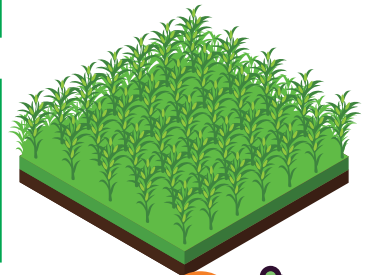
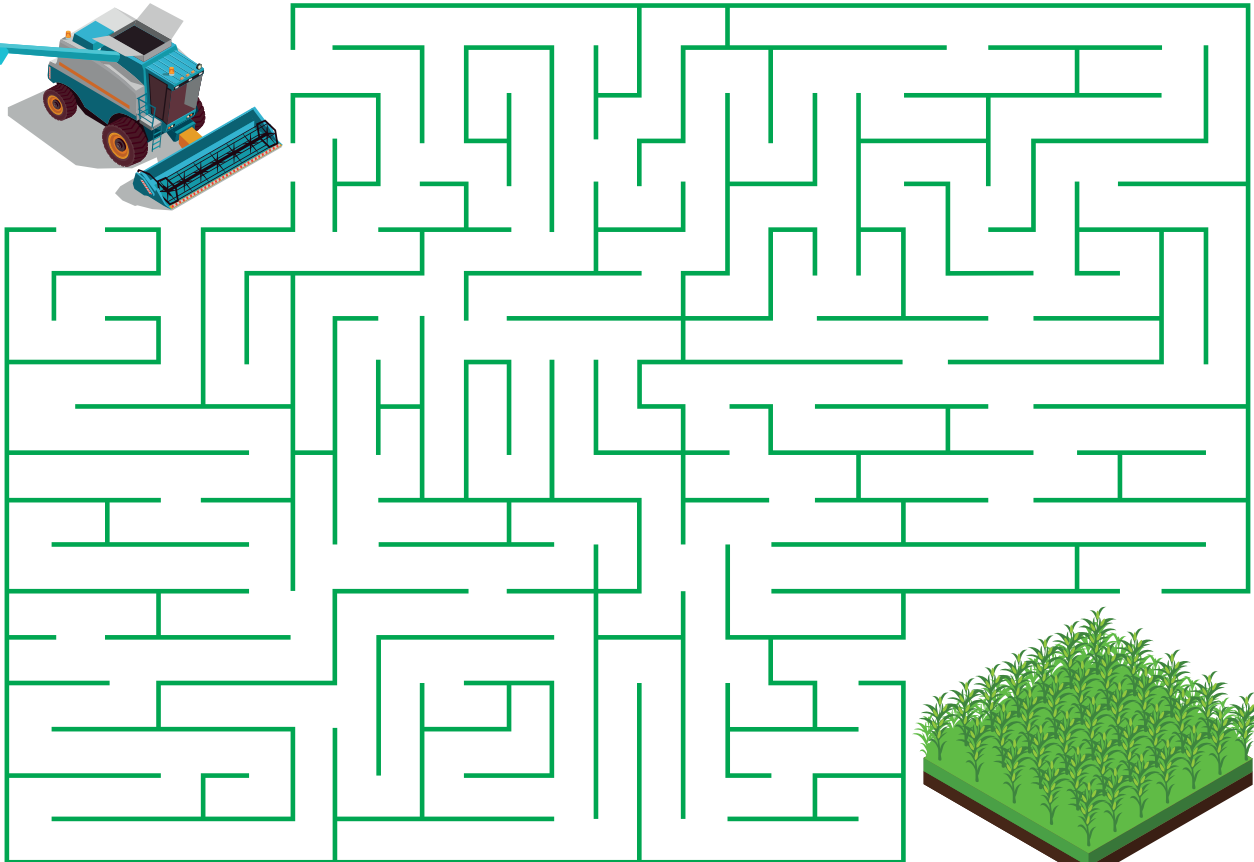
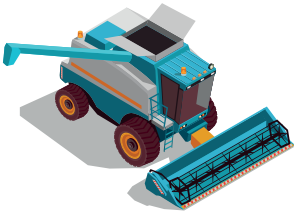


Onderwyser: "Gawie, is jy seker jy het jou huiswerk self gedoen? Dit lyk vir my darem baie soos jou pa se handskrif."

Gawie: "Dis omdat ek my pa se pen geleen het, Juffrou."



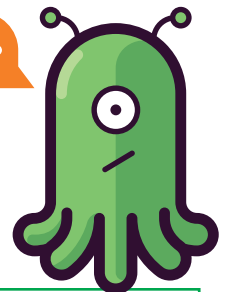
# Let's get farming!



## FARM ANIMALS



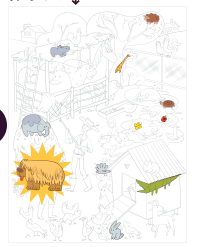
## FIND 10 HIDDEN ANIMALS



## Solutions

- Animal Blocks  
1. CROCODILE / 2. PORCUPINE / 3. CENTIPEDE  
4. JELLYFISH / 5. TARANTULA

## ANSWER





# Groot Blokraai

Vlugtig besoek aflê	Redelike		Oordrewe lof		Hinder		Keuses	Openbare betrekkinge		Afskrif aan		Drie-kroon		Bod doen
			Omhein		Wat van magdom getuig									
Ondersteun								Weë						Kort-asmigheid
Opdragte					Volksvertelling	Monteer				6de noot			Infrarooi	
						Kameelperde		Manier		Reënboog				
Seegrass		Nielig nie		Bepaalde ruimte					Terugslag					
				Floryn		Kinderdoek				Seekat	Gelykmatig	Peulvrugte	Reisiger	
				Tart										
Deugniet	Nagalm	See-skilpad	Hewig				Plafonlys							Sanik
			Heldedig											
					Makake		Hommelby				Jurk			
Vinnig gryp				Houding				Keutel						
				Dinee										
Klompe mense							Tswana				Tydperk			
							Verhewe vir pure	Erlander				Verplig wees		Boonop
Troetel	Lang, kritiese uitweiding		Ester		Neon	Kol water					Teenoor NNW			
Lywigste		Sonder fout		Hede				Êrens	Solank	Stouterd	Dele van stoele		Model-beelde	
						Aan die buite-kant								
Ontbind				Voorwaardes	Jaart					Olms		Skyf		Studeer
Argon			24 in 'n dag		Vererg		Krioel							
Vrugte op wingerdstokke							In gelyke mate				Org. vir Afr. eenheid			
							Ver genoeg gevorder				Viva in Spanje			
Afkeer	Insnyding					Anti-	Voorwendel							

# THE GIFT OF GOOD ADVICE

Offering support and encouragement, or gentle criticism, should come from a place of empathy – and when you're on the receiving end of advice, consider who it's coming from before taking it on.

I was passing a lady in a residential area presumably on her way to work while I was on my morning walk on a couple of occasions. On one of the later encounters, she said, "Well done, I can see you are making progress".

Then, on another occasion, she said, "You see; it's hard work, but it's worth it."

Now what triggered me is that this lady has no idea why we are crossing paths every so often, and she didn't know why I was walking every day; perhaps I am walking for fun, or exercise, or any other possible reason.

Yet she felt welcome to make inspiring comments.

Don't get me wrong. I wasn't bothered by what she was saying; rather, it was nice to see someone notice my effort.

But I did ask myself why I accepted her input so readily, while I knew that she didn't have any knowledge about me or my situation. And yet I took it in.

## Selective input

I asked myself how valuable, really, is input from someone who has no knowledge of why I started to work towards a goal or even what my goal is?

Then I began thinking: Whose opinions do you allow to influence your life? Many young mothers will have many tales to share on advice which they were given in the first few years of their new babies' lives.

The immediate response is often to act on these opinions that are offered so freely to you.

Sometimes the action stems from feeling ashamed, inadequate, or even angry at the input you've received. Or you may feel fantastic and ready to conquer the world after a single comment.

You don't need to respond to all these inputs.

Read that again. You don't need to respond to these inputs.

A good response is to take note of the opinions and put them away for the moment.

## Choose your advice

The problem with the opinions of others is that these opinions often come from the deliverer's own experience and the expectations they have of their own lives. Many times, the expectations we have of ourselves, are transferred to other people when we deliver opinions, and they not aligned with what they expect from themselves. It is very easy to sit on the side-line and deliver an opinion without spending a minute in the game.

By the same token, when receiving advice, we should ask ourselves: Who's opinion do you allow to have an influence on your life?

If the person delivering the opinion is one of your mentors, it is probably good to take their advice or pay attention to the opinion they are offering. After all, you know why you chose them to be your mentor and you will have a good idea of their life experience. They too, should have a fair idea of your character to be able to have a valid opinion. When an opinion is being expressed about you as a person or about anything you did or are pursuing you need to consider who is delivering the opinion.

**As mentioned earlier, you do not need to respond to every piece of advice or input you receive.**



### Careful words

Having something to say to someone is a gift, but it can be a curse too. With a few short words you can make or break that someone.

This does not mean that you shouldn't have an opinion or offer advice and encouragement to others. But it's important to be considerate and thoughtful in what you say.

If you are telling someone that they are doing well, you should at least have some idea of what their goals are.

At the time I met the lady on my walk every morning, I was starting to try to get fit enough to comfortably complete 10km in the local marathon. I am not a runner or an athletic person by any means, but it was my goal.

This person providing input had no idea what the goal was. To her it was worth giving praise for simply putting on my running shoes and taking the first step.

On the other hand, I had the input of family, who were aware of the dream that had been born from within me to accomplish this small goal. During my preparation, an injury diminished my faith in my ability to achieve my goal.

But the most precious gift in this journey was the support of my family on the day. Before we started my family was there to wish me well.

I expected to only see them at the end when we finished. But when I reached the halfway mark, my family was there for support.

To be honest I was starting to doubt if I had the strength and courage to finish, but having supporters who are proud of how far you have come, even when you are not quite there yet, and who have faith that you will finish what you started, makes all the difference.

It's what gave me the strength to push through and finish the race.

### A measure of success

On his measure of success, Warren Buffet said:

"When you're nearing your end of life, your only measure of success should be the number of people you want to have love you, actually do love you."

"I know people who have a lot of money, and they get testimonial dinners, and they get hospital wings named after them. But the truth is that nobody in the world loves them."

"If you get to my age in life and nobody thinks well of you, I don't care how big your bank account is, your life is a disaster."

### Empathy and truth

In your journey you will encounter other individuals on their own journey. Each one gathers experiences and wisdom along the way.

Each person may freely or not-so freely give advice and encouragement to anyone who may look like they need some external input.

When you are on the receiving end of the input, take the advice from whom it comes. Be conscious of the background the advisor and if they have your best interests at heart.

It does not mean that you should only take input which is easy to hear and makes you feel good.

There is also a place for negative feedback. It is easy to feel sorry for yourself and stand in disagreement as a first response in these cases but take your time to digest the input and ask the person to justify what they are saying.

We are not programmed to want to be corrected, but it is worth changing your mindset and considering if maybe some change is needed, for the better.

When you are the one delivering the input, always give your input from a place of empathy – that is, trying to feel what that other person is feeling. Be considerate of what you are saying. Be conscious of the situation the person is facing and adjust your input to give the most concrete advice or support that will cause the least amount of upset.

It all boils down to the one rule required to be empathetic: treat others the way you wish to be treated.

**"You don't need to respond to all the inputs you receive; take note of the opinions and put them away for the moment."**

**"Many times, the expectations we have of ourselves, are transferred to other people when we deliver opinions."**

**"Be conscious of the situation the person is facing and adjust your input to give the most concrete advice or support."**

By Lellita Coetzer ■

# Hearty Lamb & Veg Soup

**If you do not want to pay the cost of lamb knuckles, any cheaper cut of lamb will do for this generous family soup. You can even use less – but do not use beef or chicken, this soup really benefits by the hearty, lamb taste.**

## Ingredients

- 45 ml Olive oil
- 900 g Lamb knuckles
- 1.8 Litres prepared lamb or beef stock
- 1 x 410 g Can chopped tomato
- 80 g Tomato paste
- 2 Large carrots, coarsely chopped
- 2 Large onions, coarsely chopped
- 2 Stalks celery, finely sliced
- 500 g Frozen mixed vegetables (any combination of your choice)
- 15 ml Finely chopped rosemary
- 80 ml Finely chopped parsley
- Finely chopped garlic
- Dried red chili flakes
- Freshly-milled black pepper
- Sprinkling of sugar
- Garnishes: sliced fresh tomatoes, fresh dill
- Grated parmesan cheese
- Pesto

## Method

1. Heat half the oil in a large saucepan and add the meat. Brown lightly and add the stock, chopped tomato and tomato paste. Bring to a boil, reduce heat and cover.
2. Simmer for an hour then using a slotted spoon or tongs, remove the meat from the stock and set aside to cool enough to handle.
3. Also remove the saucepan from the heat and set aside with the stock inside.
4. Heat the remaining oil in a large frying pan and sauté the carrots, onions and celery until soft and golden.
5. Meanwhile cut the meat off the bones, discard the bones, cut the meat into small dice and add it to the vegetables in the pan. Brown lightly.
6. Now scoop off the fat that has risen to the top of the stock and puree the stock until smooth.
7. Return it the heat and add sautéed vegetables and meat, frozen vegetables, parsley and rosemary.
8. Bring to a boil, reduce heat, cover and simmer for a further 30 – 45 minutes or until the meat and vegetables are really tender and the soup is cooked to your liking.
9. Now season the soup generously and to your liking with finely garlic, chili flakes, pepper and sugar and simmer a few more minutes. It will not require added salt as the stock is salty, but if you want to, add more salt.
10. Garnish and serve with the parmesan and pesto as well as crusty ciabatta bread drizzled with garlic-infused olive oil.



Source: [ilovecooking.co.za](http://ilovecooking.co.za)



# Easy Garlic-Mussel Soup Recipe

This easy garlic- mussel soup recipe is so quick and simple because we use a few convenience products here ... and feel no guilt, fellow cook: you do not have to make everything from scratch and besides, if you're a working cook then packets and cans are often your best kitchen aids.

But if you use convenience products like stock cubes and packet soups, be careful of adding salt. You could seriously spoil the soup with too much salt. You should be able to get frozen mussel meat and mussels in their shells from most supermarkets' fish counters or freezer.

## Ingredients

- 30 ml butter
- 15 ml olive oil
- 1 medium onion, very finely chopped
- 1 small carrot, finely grated
- 1 small celery stick, finely chopped
- 2 – 4 cloves garlic, finely grated
- 250 ml dry white wine (optional you can use water instead)
- 850 ml prepared fish or chicken stock
- 10 ml thyme leaves
- 68 g Gourmet Seafood la crème Soup
- 1 kg blanched mussels in the shell (frozen still)
- 300 g mussels without the shell (frozen still)
- 125 – 200 ml cream
- 65 ml chopped garlic (or plain) chives

## Method

1. Heat the butter and oil in a frying pan and add the onion, carrot and celery. Sautè on low heat until soft and golden, about fifteen minutes. Stir in the garlic then add the wine. Bring to a rapid boil then cook on high until the wine is slightly reduced.
2. Transfer the mixture to a blender (or using a stick blender) and process until smooth then transfer to a large saucepan. Add the stock and thyme and bring to a boil.
3. Whisk the soup powder with a little cold water into a paste then whisk into the stock. Stir until thick then add the mussels. Cover and bring to a boil. Cook for 2 minutes or so just until the mussels have defrosted then remove from the heat.
4. Stir in the cream and chives

Source: [ilovecooking.co.za](http://ilovecooking.co.za)





# STYLISH ENHANCEMENTS

## for Reimagined Fortuner

**As the most trusted name in the medium SUV segment, Toyota is proud to present the 2023 Toyota Fortuner. Flaunting dramatic catamaran-inspired looks that showcase a bolder, more aggressive design language, the latest iteration of the Fortuner also boasts subtle yet impactful interior updates including an all-new interior colour palette for flagship models, ensuring this iconic SUV remains at the top of the bestseller list.**

It must be noted that the rising popularity of SUVs continues unabated and Toyota is well equipped with fit-for-purpose models in each of the respective segments. There's a four-model offering servicing the B- and C-SUV segments, ranging from the Urban Cruiser to the RAV4, with the Corolla Cross and C-HR slotting in-between. Fortuner is positioned to transition buyers from these urban cross-over type SUVs to larger, off-roading SUVs.

The natural progression for Fortuner customers within the Toyota SUV line-up would be a move to larger SUVs such as Prado and LC300. The Fortuner still commands the largest slice of the medium SUV segment, clocking in average sales of more than 800 units per month with a market share of over 40%. Fortuner's highest market share was recorded in 2020 with a staggering 57%.

### Bold New Styling

Toyota's reimagined Fortuner takes a decidedly more striking design direction with catamaran-inspired elements. These are particularly noticeable at the extremities of the vehicle which mimic a catamaran's twin hulls. The all-new, sharply angular front and rear bumper treatment featuring exclusive, aero-corner moulding is complemented by black trapezoidal foglamp housings upfront and L-shaped reflector inserts at the rear, thus reinforcing this new-found style aggression.

Exuding real road presence, the new Fortuner offers a vastly different, more aerodynamically efficient front fascia. The black mesh upper grille has been slimmed down, while the lower aperture has been considerably inflated in keeping with Fortuner's new, more assertive attitude. A bespoke, grey contrast skidplate

not only adds to the aesthetic, but enhances functionality.

Further, the exclusively designed headlamps comprising split-quad LEDs with a waterfall LED Line Guide Signature, in combination with the LED L-shaped daytime running lamps and apron-framing LED indicator lamps (featuring sequential functionality on 2.8 models), tie up the front end's more modern look.

A more delicate touch has been applied to the rear styling. Reworked elements include the aforementioned bumper treatment, a new design for the taillight clusters and a piano black numberplate garnish. Another touch of class is the black badge treatment offered across the model line-up.



# THE ALL-NEW TOYOTA URBAN CRUISER



**GO FIND YOUR FUN** All new Toyota Urban Cruiser from R 329 400

Model Shown: Urban Cruiser 1.5 Xr Automatic

Turn those Insta Story Dreams into reality with the all-new Toyota Urban Cruiser.

Bigger, bolder and boasting 353ℓ of boot space, its ultra-instagrammable design sports a slatted, bi-tone black and chrome grille, with striking 17" alloys\* to round off the look. Powering your fun is an efficient, up-sized, 1.5ℓ, four-cylinder petrol engine. Never miss a beat inside, with the latest in smartphone connectivity all neatly integrated within the touchscreen infotainment system with reverse camera.

Promising a lifetime of adventure-filled stories, it's time to Go Find Your Fun in the all-new Toyota Urban Cruiser.

\*Available on selected models.



**TWK Toyota, Standerton**

T: 017 712 1341 | E: [standertondp@twkagri.com](mailto:standertondp@twkagri.com)  
25 Krogh Street, Standerton, 2430



# THE ALL-NEW TOYOTA VITZ



**VITZ FOR VICTORY**



**TWK Toyota, Standerton**

T: 017 712 1341 | E: [standertondp@twkagri.com](mailto:standertondp@twkagri.com)  
25 Krogh Street, Standerton, 2430

All New Toyota Vitz from R 189 900

Contact us for more information on vehicle specs



The profile of the reimagined Fortuner has also been subtly tidied up. The all-new two-tone black and metal 18-inch multi-layered, machine-cut finished alloys (now standard across the range), provide the final flourish. For maximum impact, Fortuner 2.8-litre customers can specify the new bi-tone colour option which pairs a black roof (including spoiler, garnish, outer mirror housings and shark fin antenna) with the exclusive Platinum Pearl White exterior. Platinum Pearl White is now also available across the range.

Overall, the newcomer looks 'aggressive' and edgier than before, which is of course on trend for Toyota's global SUV and crossover models.

#### Subtle Interior Refinements

Leather is standard across the Fortuner range, but the package is elevated even further for 2.8-litre customers with the adoption of a new dual-tone colour palette, which sees the harmonious pairing of black and maroon leather. Matching maroon stitching adorns various surfaces providing a striking counterpoint to the predominantly black trim.



All the 2.8 variants further benefit from the addition of a USB points for rear passengers. One other discernible differentiator on these models is the revised instrument cluster which features all-new graphics, new black background ornamentation and revised opening animation for the TFT display.

Just to recap, there were several interior refinements that were made to the model year 2022 Fortuner; these included an upgrade to dual-zone climate control for 2.8-litre models, a Panoramic View Monitor (PVM) with selectable view for the range-topping VX grade, and for avowed audiophiles, a





major spec up to the 11-speaker JBL Premium Audio system. (The on-board satellite navigation function was deleted due to the preferred usage of Apple CarPlay/Android Auto which is a standard feature.)

### Continuous enhancement of safety and convenience features

It must be said that the current-generation Fortuner in its latest incarnation is a very different 'beast' to what it was when it launched back in 2016.

A particularly significant safety upgrade was made for the 2022 model year (2.8 models only). To further bolster active safety, a Lane Keeping System with Lane Departure Alert (LDA), Blind Spot Monitor (BSM) Rear Cross Traffic Alert (RCTA), Adaptive Cruise Control and a brake-synchronised Pre-Crash System were added as part of the Toyota Safety Sense suite of driver assistance technologies. Additionally, at that time all Fortuner models received an enhanced Smart Entry system with additional security measures.

Of course, this is over and above an already comprehensive list of safety kit with standard items like a full set of airbags including driver knee and curtain bags as well as must-have equipment such as ABS with EBD (Electronic Brakeforce Distribution), Vehicle Stability Control and Traction Control (electronic Active Traction Control in the case of VX models which automatically detects wheel spin and distributes torque between front and rear wheels to suppress unnecessary wheel spin and control skidding).

Other Fortuner-specific items on the standard menu include Hill Assist Control and Trailer Sway Control – the latter automatically detects excessive movement of the trailer and uses brakes and engine power to help reduce sway. All 4x4 grades offer a low-range transfer case for enhanced off-road ability (2.8 4x4 variants chip in with Downhill Assist Control as well), while all Fortuner grades incorporate a rear differential lock as standard.

### Engine line-up & transmissions

As before, Fortuner is offered with the choice of two engines headlined by the strong and durable 2.8-litre turbo-diesel four-cylinder engine, developing a meaty 150kW of power and 500Nm of torque – it's mated exclusively with the six-speed automatic transmission. The 2.4 GD-6 produces a healthy 110 kW and 400 Nm and is available in both 6-speed manual and 6-speed auto transmission configurations.

Source: [www.motorpress.co.za](http://www.motorpress.co.za) ■



**Fin whales are just one of the many types of whales that grace our shores and once provided nourishment to early communities.**

# More about the 'razor back' or fin whale



The 24-metre-long suspended skeleton of a fin whale greets visitors at the main entrance of the Ditsong National Museum of Natural History, in the heart of Pretoria. It is one of the city's famous landmarks.

In 1969, the Union Whaling Company in Durban donated the skeleton to the then Transvaal Museum.

Transporting such an enormous skeleton was no easy task. The skull alone weighed two and a half tonnes. After the bones were brought to Pretoria by road in 1970, the long process of waterproofing and mounting started.

Each bone was encased in resin and reinforced with fibre glass for protection against the elements. Whale bones are quite porous and can rapidly deteriorate when exposed to changing weather conditions.

In addition, some of the vertebrae had been damaged by a harpoon and the museum's taxidermist was tasked with their reconstruction. The skeleton was mounted on a specially designed metal structure, which could hold the enormous weight, and still does 50 years later.

**"Female fin whales can reach lengths of up to 27 metres and weigh as much as 80 000 kg."**

**"During the 1970s, six whale species were hunted off the South African coast: sperm, fin, sei, Bryde's minke and orcas."**

## More about the 'razor back' or fin whale

Fin whales – also known as "razor backs" or "finbacks" because of the pronounced ridge that runs from their dorsal fin to their tail – are one of the largest whale species in the world, second only to the blue whale.

According to the International Whaling Commission, female fin whales (*Balaenoptera physalus*) tend to be slightly larger than males; they can reach lengths of up to 27 metres and weigh as much as 80 000 kg.

There are at least three sub-species, namely Northern Hemisphere, Southern Hemisphere, and pygmy fin whales.

Fin whales are baleen whales, which means that they use a filter-feeding system inside their mouths to catch animals such as krill. An interesting feature of these whales is the fact that the right side of the lower 'lip' is white, while the left side is darker.



Walvisvangst, Caspar Luyken, 1711. © Rijksmuseum





The fin whale skeleton at the DNMNH in Pretoria



The fin whale skeleton at the DNMNH in Pretoria

Fin whales are widely distributed in colder offshore waters. Scientists do not yet fully understand their movements but what they do know is that these whales' seasonal migrations differ from those of blue and humpback whales.

Fin whales were severely hunted during the commercial whaling era (c. 1890 to 1980). A study by American and

Australian researchers on the global distribution of fin whales in the post-whaling era reported that over 900 000 fin whales were killed during the commercial whaling era.

As a result, their abundance was reduced by over 70%. The fin whale population has slowly been recovering their numbers since the moratorium on whaling and is now listed as

'vulnerable' on the IUCN Red List of Threatened Species.

### Whaling past and present

Prior to the commercial era, people hunted whales for centuries. The Saqaaq Paleo-Inuit culture, for example, hunted whales along the Greenland coast 4000 years ago.

“Blue and fin whales feed along South Africa’s west coast, where you can see them in their summer migrations.”

## The Whaler

by Joseph Edwards Carpenter

Oh! the whale is free of the boundless sea,  
 He lives for a thousand years;  
 He sinks to rest in the billow's breast,  
 Nor the roughest tempest fears:  
 The howling blast as it hurries past,  
 Is music to lull him to sleep,  
 And he scatters the spray in his boisterous play,  
 As he dashes the king of the deep.  
 Oh! the rare old whale, 'mid storm and gale,  
 In his ocean home shall be,  
 A giant in might, where might is right,  
 And king of the boundless sea!  
 A wondrous tale could the rare old whale  
 Of the mighty deep disclose,  
 Of skeleton forms of by-gone storms,  
 And of treasures that no one knows;  
 He has seen the crew, when the tempest blew,  
 Drop down from the slippery deck,  
 Shaking the tide from his glassy side,  
 And sporting with ocean and wreck,  
 Then the rare old whale, 'mid storm and gale  
 In his ocean home shall be,  
 A giant in might, where might is right,  
 And king of the boundless sea.  
 Then the whale shall be still dear to me  
 When the midnight lamp burns dim,  
 For the student's book, and his favourite nook,  
 Are illumed by the aid of him;  
 From none of his tribe could we e'er imbibe  
 So useful, so bless'd a thing;  
 Then we'll on land, go hand in hand  
 To hail him the ocean king,  
 Oh! the rare old whale, 'mid storm and gale,  
 In his home will ever be,  
 A giant in might, where might is right,  
 And king of the boundless sea!

In 2016, a group of Danish researchers analysed traces of ancient DNA from soil that was once part of old Saqqaa rubbish dumps. They found evidence of large-scale bowhead whale exploitation despite the lack of whale bones in the dumps.

This is because it was easier to cut the whale meat and blubber from a carcass, rather than drag the entire body, complete with heavy bones to a camp site.

The genetic evidence in the soil indicated large quantities of whale skin, meat, blubber, or intestines of whales.

Hunting was possible in very early communities, even those without large boats and toggling harpoons – technologies that the Saqqaa did not have – since smaller harpoons or lances covered in rotten meat could cause a lethal infection from a small wound.

People could also have scavenged from beached carcasses – a practice that has been recorded in many places during prehistoric times.

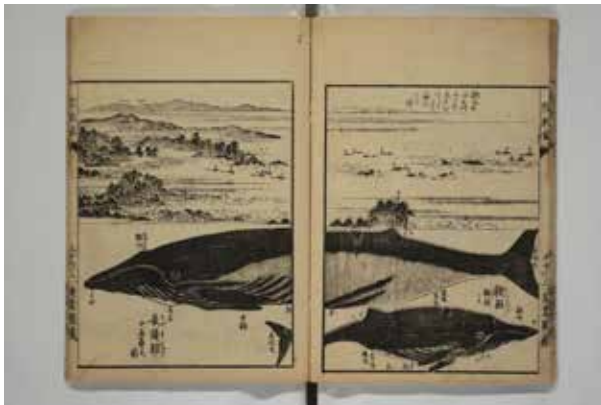
### Why whales were hunted

During the 1970s, six whale species were caught off the South African east coast: sperm, fin, sei, Bryde's minke and orcas.

At the time, the whaling economy was mainly driven by the demand for whale oil, used for the manufacture of margarine, shortening and soap, as well as sperm oil used in the production of pharmaceuticals, cosmetics, biodegradable detergents, printing ink, fatty alcohols, and heavy-duty lubricating oils.

Whale meat, bone, and protein meal products were also supplied to the animal feeds industry, while frozen meat and meat extract were sold for human and animal consumption.

Blue and humpback whales have been protected species since the 1960s and right whales since 1936.



Whales and Whale Oil by Hasegawa Settan, 1826. © Metropolitan Museum



Walvisjagers, Adriaen van Salm, 1720-1728. © Rijksmuseum

However, commercial whaling was banned worldwide in 1982 by the International Whaling Commission. However, Japan, Norway, and Iceland continue to hunt these animals on varying scales, despite the ban.

Species such as the fin whale are protected by global directives, such as the International Union for Conservation of Nature (IUCN) and the Convention on International Trade in Endangered Species of Wild Fauna and Flora (CITES).

### A whale-watching hub

South Africa is one of the best whale watching destinations in the world. According to the ICW, regulated commercial whale tourism operates

across more than 20 designated areas, which stretch along the coastline from Port Nolloth in north-west to Sodwana Bay in the north-east.

The local whale watching season starts in June and runs through November, when the migratory whales find themselves in our waters.

The Hermanus Whale Festival will take place at the end of September this year and is a celebration of all marine life, with a special focus on southern right whales.

Blue and fin whales also feed on krill during their summer migrations along South Africa's west coast, which presents another opportunity to see these incredible creatures.

To read more about fin and other whales, visit the International Whaling Commission and IUCN Red List of Threatened Species websites.

By Dr Annie Antonites, Curator  
Ditsong National Museum of Natural History ■



# Cold, but pretty

The warm summer months are almost over and now is your opportunity to get your garden ready for the cold winter months.

Here are some important steps to prepare your garden for the winter months ahead.



## Cleaning and tidying

Clean up diseased plants. Remove invasive weeds.

## Trim, prune and tidy your edges

Autumn is a good time to trim some of your perennial garden plants. Take care to ensure you choose the right ones.

Resist the urge to cut back all your perennial flowering plants, particularly those covered in seed heads. Remember that stalks and leaves also provide winter protection for a plant's tender crowns.

## Take care of your lawn

Grass, just like other plants, does get affected by the cold winters. The best way to prep your lawn is to give it a good last feeding before the winter. This helps to thicken the grass before the cold sets in. When mowing, reduce stress on the lawn by lifting your mowing height.

Also be aware of traffic. A heavily worn path will be slower to green up in the spring and cause compaction in the soil.

## Clean and sharpen tools

Autumn is a great time to rejuvenate your tools and extend their lifespan by giving them some attention.

This is a task that is often difficult to keep up with when gardening is in full swing, so take the down time to do some cleaning and caring.

## Bolster your soil

Winter mulching is a popular practice and a great way to protect your plants while they are dormant. Good choices for mulch are nut shells, wood chips or bark, leaves, pine needles and straw.

Spreading mulch in your garden helps protect the soil from damage caused by frost or heavy rains.

## Harvest and store vegetables

There are five methods of storing those last summer vegetables: you can either opt for drying, canning, curing and salting, freezing or common storage – or a combination.

In general, vegetables need a cool, dry, dark, and well-ventilated location to prevent rotting.

## Winter-proof your roses

About six weeks before the first average frost date for your region, give your roses their last dose of fertiliser. About four weeks prior to the first frost, water thoroughly one last time.

Clear away fallen leaves beneath your plants. Remove any remaining leaves and dead canes from the rose plant.

Using fresh garden soil or compost, mound it to a height of 20cm around the base of each plant. After the first frost, add a 7cm layer of mulch over the soil.

## Help your garden 'helpers'

Be proactive! Keep your bird feeders topped up.

Birds especially appreciate fatty, high-energy foods such as suet during the cold months. Offer water, especially in the dry climates, and clean your feeders and bird baths regularly to maintain good hygiene.

## Harvest and regenerate your compost

You may be tempted to ignore your compost heap now that the heat of the summer is over.

But you can keep those microbes working a little bit longer. Simply build your autumn compost heap with plenty of autumn leaves, straw, and wood chips layered with kitchen scraps.

## Divide and plant bulbs

Three to four weeks after that glorious display of flowers, is the best time to dig up and divide any plants that appeared crowded or untidy during the growing season.

Visit us:

Address: R543 Farm Welverdiend.

Piet Retief

Phone: 072 796 3278 ■



# Your health is your

# WEALTH

**Why Medical Insurance and Life Cover are crucial to your financial planning and well-being – and TWK can help you get there.**

**M**edical insurance and life cover are arguably two of the most important forms of insurance that individuals should consider when it comes to financial planning.

It's essential to understand the differences between these two types of insurance and how they can benefit you and your loved ones in the long run.

Medical insurance is a broad term that includes medical schemes (also referred to as medical aid), gap cover, and low-cost primary healthcare cover products. It offers coverage towards medical costs such as hospitalization, medicinal expenses, illnesses, and treatment of diseases.

Health insurance covers costs of medical expenses that can hit anyone at any time and drain out your finances.

But medical insurance is not just for the sick; it is also for healthy people to be sure they stay that way as it assists with prevention. If you're trying to save money by only thinking about the day you get sick, all your "savings" might just be enough for a decent funeral.

Life cover as described here is also a broad term that includes life insurance, disability and dread disease cover, as well as investment products such as retirement annuities, tax-effective savings vehicles like tax-free savings accounts, and savings for your children's education.

It could potentially take care of your family's monetary needs after an event such as illness or disability that prevents you from earning an income, or your death. Life cover can serve as a shield that protects your loved ones who are financially dependent on your income.

At TWK Agri's insurance division, we understand the importance of medical insurance and life cover in financial planning.

Our advisors in the medical insurance and life insurance departments can provide you with expert advice and guidance to ensure that you make informed decisions that align with your financial goals.

Contact us today to find out more about how we can help you secure your financial future.

**"Life cover can serve as a shield that protects your loved ones who are financially dependent on your income."**

ensures they will be taken care of in the event of your premature death, disease or disability. This cover can help you mitigate the effects of life's unpredictability.

It's essential to incorporate both medical insurance and life cover into your financial planning to ensure that your long-term financial goals are achieved, and you maintain your financial well-being in the present as well.

**The six steps of the financial planning advice process, as laid out by the Masthead Financial Planning Institute, can help guide you in this regard. These steps include:**

- **setting financial goals;**
- **identifying and evaluating your current financial situation;**
- **developing a financial plan;**
- **implementing the financial plan;**
- **monitoring the plan;**
- **reviewing and revising it as needed. ■**

#### Medical department

medquote@twkagri.com  
(013) 590 7266  
(Ask for medical)  
C: +27 (0)76 182 7041

#### Life department

lehlars@twkagri.com  
(017) 824 1000  
(Ask for life insurance)  
C: +27 (0)71 372 5175





# TWK Mechanisation

## AGRO MASZ PRODUCTS



## JACTO DEALER

Contact us for all your  
Jacto Sprayers and Spares.



### Contact:

#### **MPUMALANGA:**

Joe Filter 082 662 7706 (KZN)  
BJ Moolman 072 593 8648  
Corne Laas 072 818 8911  
Kevin Worth 082 415 0978  
Christo Odendaal 072 383 5374  
Gerhard Malan (Rudamans) 066 301 6844

#### **KZN:**

Darrin Martens 079 873 7310  
Neil Blaylock 082 673 1033  
Stuart Ramseyer 082 859 5752  
Roy Meter 076 042 4427



T's & C's apply.

[www.twkagri.com](http://www.twkagri.com)



# Long Service Awards

## 35 Years

### Trade

Khetheyakhe Cele

## 30 Years

### Trade

Aaron Mkhaliphi

### Arrowfeeds

Dumsane Mdluli

## 25 Years

### Timber

Johan Nel

### Trade

Yashika Somaru

### MTP (Piet Retief Sawmill)

Jabulani Vilakazi  
Mbuso Manana  
Sunday Mabena  
Bhutana Simelane  
Mfanufikile Nyawo

## 20 Years

### Mkondo Mill

Sfiso Nkwanyana

### Welverdiend

Nelly Mtshale

### Timber

Martha Jacobs  
Magda Robberts

### Trade

Marius van der Watt  
Christien Venter

### MTP (Rutland Sawmill)

Douglas Malomane

### BedRock

Thomas Mabunda

## 15 Years

### Mkondo Mill

Mfanimpela Shabangu

### Mkondo Silo

Nkosinathi Nkosi

### Financing

Zita Mollentze

### Timber

Steve Pretorius  
Susan Kuhn

### Trade

Thulani Mahlaba  
Ernest Bricout  
Elzaan Weber  
Nkala Brightman  
Fikile Ndlovu  
Andriesa Engelbrecht  
Pretty Mtshali  
Muzi Mthimunya  
Cosmas Mbatha  
Ryno Kirk  
Pamela Bower

### MTP (Rutland Sawmill)

Emanuel Sibuyi  
Stefanus Nalazi

### MTP (Piet Retief Sawmill)

Lucky Motaung  
Thulani Thwala  
Dumisani Ntshangase  
Themba Ntuli

### BedRock

Mpumelelo Mfelefe  
Joseph Sithole  
Thabo Khumalo

### Gromor

Monde Mdinwa

### Rudamans

Vincent Maluka

## 10 Years

### Mkondo Mill

André de Waal  
Hennie Nel  
Sizwe Ntshangase  
Sandile Dlamini

### Corporate Services

Riaan Janse van Rensburg

### Pot & Plant

Margret Zwane

### Insurance

Bertha Janse van Rensburg  
Vivian Shabalala

### Financing

André Croeser

### Timber

Martin Mentz  
Zamantungwa Khumalo  
Celi Nkosi  
Robert Ndlovu  
Adriaan Bezuidenhout

### Trade

Praisegod Myeni  
Patience Mankebe  
Melusi Hlatshwayo  
Maureen Mthethwa  
Joe Filter  
Elise Breda  
Mapudumo Ntsane  
Lionel Ingram  
Sanele Ncanana  
Khayelihle Mathunjwa  
Avitha Billyram  
Zacharia Maseko  
Lettia Paraffin  
Carina Smit  
Christian Kubona  
Jabu Mthethwa  
Themba Chonco  
Johan van Niekerk  
Jenny Govender  
Jan Oosthuizen

### MTP (Piet Retief Sawmill)

Senzo Mavimbela  
Themba Nxumalo  
Ntokozo Ngwenya

### MTP (Rutland Sawmill)

Hafu Mnisi  
Patrick Mangana  
Phillip Malupe

### Motors

Willem Janse van Rensburg  
Ancerina Rostoll  
Nkosinathi Nkosi  
George Maseko

### BedRock

Lemomba Magabe  
Mzuvelile Malisa  
Lutendo Munyai  
Njabulo Buthelezi  
Sinethemba Nkqayi

### Gromor

Vusumuzi Ngidi  
Joseph Meyiwa  
Khulekani Nxumalo  
Lindiwe Ndlovu  
Angel Nxumalo  
Ntombi Madondo  
Nomvula Mkhonza  
Yusi Nxumalo  
Mlungisi Nxumalo  
Laurence Sibiya  
Innocent Meyiwa  
Siphiwe Ngobese  
Naren Budram  
Nelly Dlamini  
Thobile Ndlovu  
Buselaphi Mchunu  
Rose Ngobese

### Rudamans

Collin Mabane  
Debbie-Lee Wilmans  
Robin Flores  
Alice Mahlo

## 5 Years

### MTP (Rutland Sawmill)

Siyaphi Shakoane  
Goodman Magagule  
Zakhele Sambo  
Thabo Mashego  
Ayat Nahlovu  
Desmond Nkosi  
Jordan Madzivi  
Elvis Nkuna  
Wonderboy Dibakwane  
Thabo Malomane  
Surprise Mosome  
Fask Ngwenya  
Cyril Ubisi  
Jonathan Nyathi  
Velaphi Makhubela  
Bongani Mphuti  
Kenneth Mhlongo  
Abigail Theko  
Maile Makwala  
Mario Muanzo  
Shumani Phoweni  
Solly Sibuyane  
Mhlakazo Shongwe

### MTP (Piet Retief Sawmill)

Sabelo Khumalo  
Maqhawe Motha  
Milton Nkonyane  
Mbhekeni Mndebele  
Mvana Mndebele  
Simon Ngwenya  
Philani Zwane  
Busi Nkosi  
Nhlanhla Nkosi  
Nozipho Dlamini

### MTP (Dunnage)

Gerhard Swart

### BedRock

Maria Dugisi  
Lawrence Mokotedi  
Kagisho Khoza  
Malefetsane Molise  
Thabo Khaile

**“Great things in business are never done by one person. They’re done by a team of people.”**



# COMPANY NEWS

TWKs News and Company Culture

## Wittenberg Farmers Day

At Wittenberg Farmers Day, Rudamans, TWK Outdoor and Mechanisation presented their products. A "Fun and Games" stall was set up by MTP, and refreshments were sold by Welverdiend Guesthouse.





## ***TWK ondersteun Hoërskool Garsfontein***





## Bonsmara Vlakke Boeredag en Veiling



**In support of Barberton High School's musical, TWK sponsored beautiful T-shirts.**



**TWK supports Ermelo High School with 1st Team Rugby uniforms and bags**

”

**Top 10  
brokerages for  
2022**

**TWK Medical Insurance has been recognized in BestMed's Top 10 brokerages for 2022.**

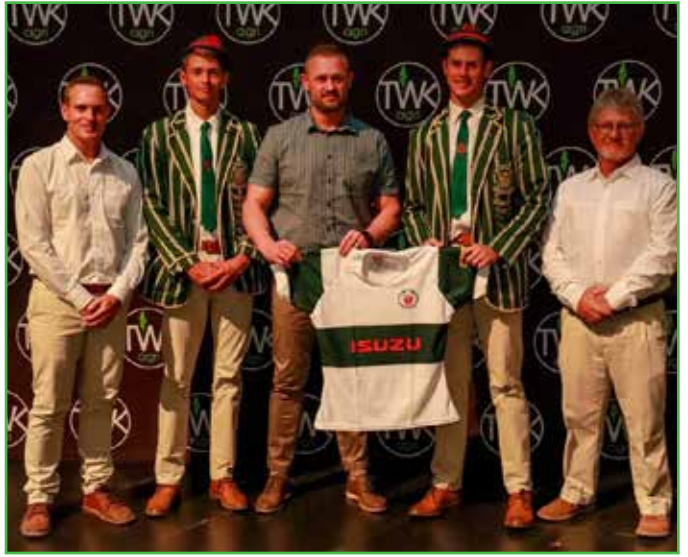
*Congratulations on this outstanding achievement!*



**Versekering  
Insurance**



## EHS Bedankingsaand



## Pot & Plant's Fairy Garden Workshop



**Congratulations to Mr Zuma on winning the monthly Lucky Draw at TWK Trade, Pietermaritzburg.**



## EUM Roadshow and Exhibition



*Mandla Ngwenya*

We would like to congratulate Mandla Ngwenya on the successful completion of his Postgraduate Diploma in Management Practice.

Your hard work and perseverance have paid off. Congratulations!

TWK AGRI TEAM





# Garden and Life

## The Christ for Mama Africa Community Centre.

The centre caters for all community members but focuses on youth development. It provides services such as counselling, preparing the youth for employment and allowing younger kids to develop their reading skills.

Candidates were eager to learn, which was demonstrated in the lively debates about using organic material as insecticides. They further found the concept of entrepreneurship interesting and became very enthusiastic when they were provided with examples of people who use agriculture as a vehicle to make a living.

The youth gardeners expressed great interest in combating infestations of weeds and bugs that would affect their crops. Extra seeds were distributed to assist the centre in starting and growing its garden.







*In our social responsibility duties, we strive towards ethical standards, fulfilling our civic duties, that the actions of our company or individuals may benefit the whole society. We aim to keep a balance between economic growth, the welfare of the society and the environment. As the social responsibility applies to both individual and the company as a whole, we aim to incorporate our daily actions and decisions in such a manner that we can help to ensure the integrity of the society as well as assisting with the protection of the environment.*

#### **Madola Harvest House Church in Madola.**

This community is situated approximately 15 km from the Swaziland border but still falls within the municipal district of Piet Retief. The church provides spiritual nourishment for residents and social service assistance to community members. Pastor David Mkhonto, who services this community, acted as interpreter.

This group of approximately 50 people consisted mainly of scholars (Grade 7 Madolo Primary School) and elderly members from the community. The training methodology (Garden and Life) used at this site was theory and practical-based, using visual projections to anchor information.

During the programme's practical component, candidates actively built their gardens and took pride in their achievements.





# Kovsies Uitstalling



## Top Achievers

Congratulations to Mr Andi Niebuhr, Marketing Clerk at TWK Corporate Services on completing his BCom Marketing Management Degree.



Andi and Cordula Niebuhr

## TWK ondersteun Laerskool Piet Retief Sportspanne





## TWK Trade, Greytown, supports Buhlebomvoti Lsen School



## Heyshope Dam Bootklub "Carp Classic" 2023



Heyshope Dam het omtrent gegons van die hengelaars tydens Paasnaweek. 117 Mense het deelgeneem aan die Heyshope Dam Bootklub "Carp Classic" 2023.

Twee hengelaars het die eerste prys gedeel met Karpe wat presies 4.390kg geweeg het. 2de prys Karp (4.120kg), 3de prys Karp (4.030kg)  
Beste seun: Barber (11.630kg), Beste dogter: Karp (3.6kg)

*A successful boxing contest was held at Junkshop Pongola. Supporting local sports with TWK Agri, SuperStrong and Shonalanga Maize Meal.*





## *TWK Nelspruit celebrates Easter*



## New Hanover Bass Fishing Competition





# Slipper Day 2023





## Trotse borg van Loskop Maraton, 2023



### TWK borg skooluniforms



### TWK ondersteun Laerskool Paulpietersburg se rugbyspan





## TWK Meganisasie stal uit by Royal-skou





## TWK Handel, Ermelo, ondersteun Hoëveld Boere Gholfdag



*TWK Agri received a Silver Award from MSD Animal Health. Angelique Trebble and Dr Princess Moswa-Kato in the picture.*





## Trotse borg van Hoërskool Piet Retief





## Vumbuka Trust's Annual Function, 2023

Vumbuka Trust hosted its annual function for 2023. The Trust has been celebrating ten years since its formation in 2013. The Trust announced R2 500 000 funding available for Socio-economic and Enterprise Development projects to apply for 2023. The 10th application round will commence on 14th April 2023 and will be closing on 05 May 2023.

Local media, Mkhondo municipality officials, NGOs, and Vumbuka Trust potential beneficiaries attended the event. The Trust awarded certificates of appreciation to some of its previous beneficiaries for their work for the community of Mkhondo.

The winners are:

- **Qalani Primary School** – Education
- **Sport development** – Mkhondo Eagles - Cricket
- **Education and Welfare** – Masifunde Early development centre
- **High Impact Award** – Mkhondo Local Football Association

The function had local performances by Ubuhle Bezintombi traditional dancers, Ndlela High School -Choir, and the local Mkhondo theatre group.





# TWK supports Super Hero Golf Day





## EUM bied stelsel opleiding aan by Ramphela Funerals in Soweto



## Chrissiesmeer Farmers Day

Several TWK departments participated in the Chrissiesmeer Farmers Day including Trade, Insurance, Financing, Marketing, Mechanisation and Grain. TWK received a certificate for taking 1st Place for the Best Exhibition of the day.





## *When it is warm inside*

Whether it's a hearty soup or a hot protein-rich meal from warm Mexico you're after, wrap up the evenings with these simple winter delights.

### *Hearty vegetable and lentil soup*

#### Ingredients

- 85g dried red lentils
- 2 carrots, quartered lengthways then diced
- 3 sticks celery, sliced
- 2 small leeks, sliced
- 2 tbsp tomato purée
- 1 tbsp fresh thyme leaves
- 3 large garlic cloves, chopped
- 1 tbsp vegetable bouillon powder
- 1 heaped tsp ground coriander

#### Method

1. Tip all the ingredients into a large pan.
2. Pour over 1½ litres boiling water, then stir well.
3. Cover and leave to simmer for 30 mins until the vegetables and lentils are tender.
4. Ladle into bowls and eat straightaway.



## *Rich chilli con carne*

### Ingredients

- 1 large onion
- 1 red pepper
- 2 garlic cloves
- 1 tbsp oil
- 1 heaped tsp hot chilli powder (or 1 level tbsp if you only have mild)
- 1 tsp paprika
- 1 tsp ground cumin
- 500g lean minced beef
- 1 beef stock cube
- 400g can chopped tomatoes
- ½ tsp dried marjoram
- 1 tsp sugar (or add a thumbnail-sized piece of dark chocolate along with the beans instead, see tip)
- 2 tbsp tomato purée
- 410g can red kidney beans
- plain boiled long grain rice, to serve
- soured cream, to serve

### Method

1. Chop 1 large onion into small squares, about 5mm square. The easiest way to do this is to cut the onion in half from root to tip, peel it and slice each half into thick matchsticks lengthways, not quite cutting all the way to the root end so they are still held together. Slice across the matchsticks into neat dice.
2. Cut 1 red pepper in half lengthways, remove stalk and wash the seeds away, then chop.
3. Peel and finely chop 2 garlic cloves.
4. Put your pan on the hob over a medium heat. Add 1 tbsp oil and leave it for 1-2 minutes until hot (a little longer for an electric hob).
5. Add the onion and cook, stirring fairly frequently, for about 5 minutes, or until the onion is soft and slightly translucent.
6. Tip in the garlic, red pepper, 1 heaped tsp hot chilli powder or 1 level tbsp mild chilli powder (if you prefer it mild), 1 tsp paprika and 1 tsp ground cumin.
7. Give it a good stir, then leave it to cook for another 5 minutes, stirring occasionally.
8. Serve with rice, and a bowls of of sour cream. Optional add-ons include grated cheese, and guacamole.





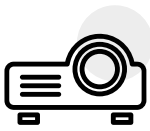


BOOK OUR

# Boardroom

FROM JUNE TO AUGUST 2023 @ A SPECIAL RATE

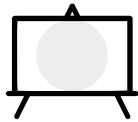
## Conference Package Includes:



Data  
Projector



Flip Chart



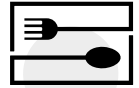
Whiteboard



Water &  
Sweets



Wireless  
Internet



Catering  
on Request



Contact Leandra for any inquiries.

C: (076) 078 0632 | E: [welverdiend@twkagri.com](mailto:welverdiend@twkagri.com)

A: R543, Kruger Street, Piet Retief, 2380

W: [www.welverdiend.com](http://www.welverdiend.com)  



# Keep on doing it for God

**“Whether in comfort or whether in distress, or hardship, or loneliness, we need to press on.”**

As I am writing this message, I'm sitting in a hotel room in the beautiful country of Namibia, getting ready to catch my plane to fly back home to my dear family in South Africa.

Again I am very aware of the fact that as believers we need to embrace whatever comes our way from the Lord. We think of our beloved apostle Paul and what him and the disciples went through in their service towards their Lord.

We read from 2 Corinthians 6:3- 10 (NKJV) ***“We give no offense in anything, that our ministry may not be blamed. 4 But in all things we commend ourselves as ministers of God: in much [a]patience, in tribulations, in needs, in distresses, 5 in stripes, in imprisonments, in tumults, in labors, in sleeplessness, in fasting’s; 6 by purity, by knowledge, by longsuffering, by kindness, by the Holy Spirit, by [b]sincere love, 7 by the word of truth, by the power of God, by the armour of righteousness on the right hand and on the left, 8 by honour and dishonour, by evil report and good report; as deceivers, and yet true; 9 as unknown, and yet well known; as dying, and behold we live; as chastened, and yet not killed; 10 as sorrowful, yet always rejoicing; as poor, yet making many rich; as having nothing, and yet possessing all things.”***

What a beautiful scripture; it sums up exactly what we need to be doing as believers.

Whether in comfort or whether in distress, or hardship, or loneliness, we need to press on. It's a tremendous honour and a privilege to be an ambassador for Christ.

Today, as you go about your work, remember people are watching you and they are watching your every move, your behaviour, and your attitude.

So do all things with the love of God and He will reward you amply and protect you and give you the desire of your heart.

Bless you,

**Angus & Jill Buchan**

**2 Corinthians 6:3- 10 (NKJV) “We give no offense in anything, that our ministry may not be blamed. 4 But in all things we commend ourselves as ministers of God: in much [a]patience, in tribulations, in needs, in distresses, 5 in stripes, in imprisonments, in tumults, in labors, in sleeplessness, in fasting’s; 6 by purity, by knowledge, by longsuffering, by kindness, by the Holy Spirit, by [b]sincere love, 7 by the word of truth, by the power of God, by the armour of righteousness on the right hand and on the left, 8 by honour and dishonour, by evil report and good report; as deceivers, and yet true; 9 as unknown, and yet well known; as dying, and behold we live; as chastened, and yet not killed; 10 as sorrowful, yet always rejoicing; as poor, yet making many rich; as having nothing, and yet possessing all things.”**





Husqvarna®

# WE ARE BY YOUR SIDE

## 580BTS Blower

The Husqvarna 580BTS is the most powerful commercial back pack blower designed for demanding tasks. Large air flow and high air speed are provided by an efficient fan design together with the powerful X-Torq® engine, while the commercial grade air filter gives long operating time and trouble free use.

#WeAreHusqvarna  
[www.husqvarna.com/za](http://www.husqvarna.com/za)



# JoJo - kwaliteit wat die toets van die tyd deurstaan.



**Na vier dekades van innovasie kan jy altyd op JoJo vertrou om topgehalte diens en produkoplossings vir jou unieke behoeftes te lewer.**

**Kies die handelsmerk waarop Suid-Afrikaners vertrou - kies JoJo!**

Vir meer inligting besoek [jojo.co.za](http://jojo.co.za) of jou naaste TWK Agri-handelstak.

**JoJo**  
FOR WATER FOR LIFE